



Comune di
Pistoia



Comune di
Agliana



Comune di
Quarrata

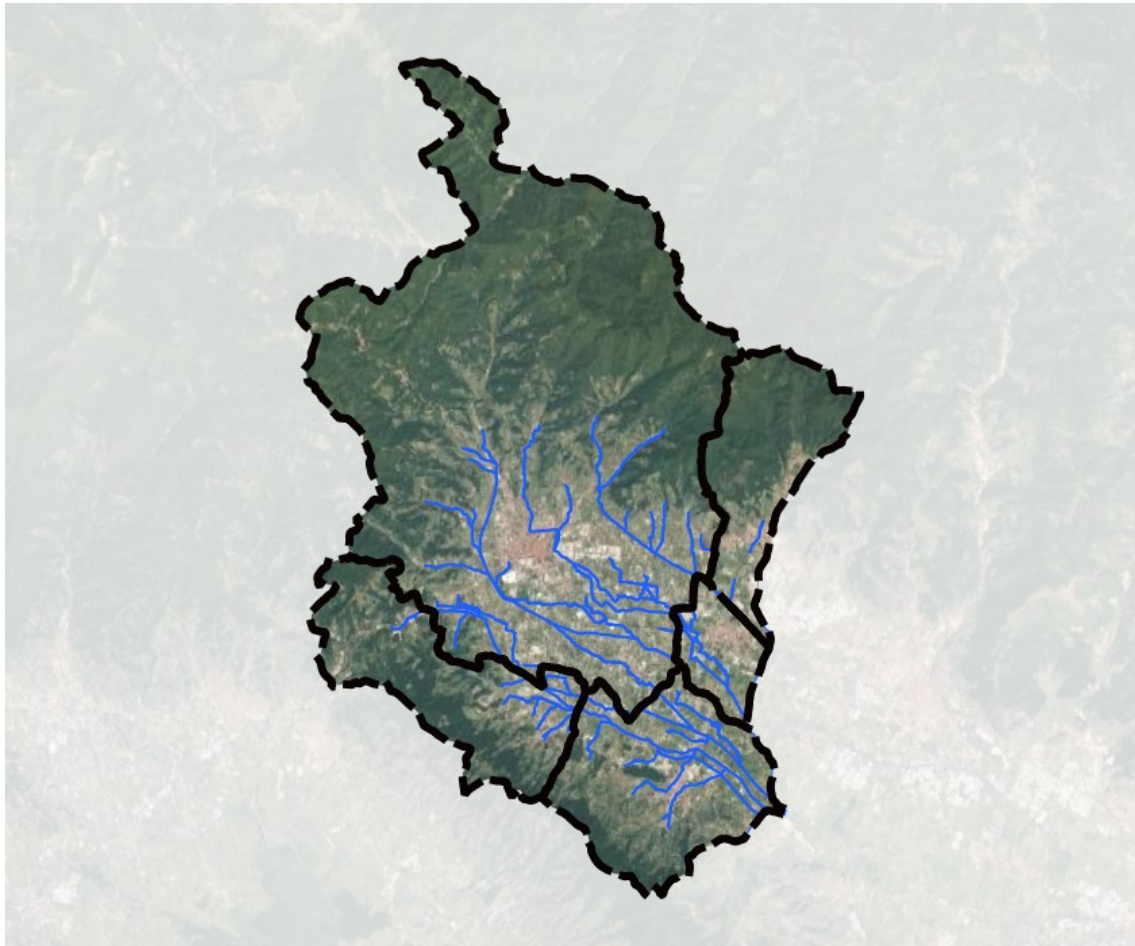


Comune di
Montale



Comune di
Serravalle P.se

Aggiornamento delle mappe di pericolosità da alluvione e rischio di alluvioni comprensive di battenti e velocità necessarie per l'applicazione della LR 41/2018, ai sensi dell'art. 4 della legge regionale n°73 del 27/12/2018 per i Comuni di Pistoia, Agliana, Quarrata, Montale e Serravalle Pistoiese



IDRO.A03 – Portate al colmo di piena

Raggruppamento temporaneo di imprese

Gennaio 2024



Rev.00



D.R.E.A.m. Italia

Ing. Simone Galardini

Ing. Chiara Chiostrini

Ing. Federico Orlandini



West Systems

Ing. David Settesoldi

Ing. Giulio Sommani

Ing. Francesco Valtancoli



A4 Ingegneria

Ing. Cristiano Cappelli

Ing. Daniele Baldi

INDICE

1	PREMESSA	5
2	TABULATI ANALISI IDROLOGICA MODELLO PIENE PER MODELLO IDRAULICO ACQUE ALTE	6
3	TABULATI ANALISI IDROLOGICA MODELLO PIENE PER MODELLO IDRAULICO ACQUE BASSE	27

ELENCO TABELLE

Tabella 2-1 – Tabulati analisi idrologica al colmo immissioni Acque Alte TR 30 anni	13
Tabella 2-2 – Tabulati analisi idrologica al colmo immissioni Acque Alte TR 200 anni	20
Tabella 2-3 – Tabulati analisi idrologica al colmo immissioni acque basse modello Acque Alte TR 30 anni ..	23
Tabella 2-4 – Tabulati analisi idrologica al colmo immissioni acque basse modello Acque Alte TR 200 anni	26
Tabella 3-1 – Tabulati analisi idrologica al colmo immissioni Acque Basse TR 30 anni	30
Tabella 3-2 – Tabulati analisi idrologica al colmo immissioni Acque Basse TR 200 anni	33

1 PREMESSA

Si riportano nel presente documento i tabulati dell'analisi idrologica delle portate al colmo per i due modelli idraulici:

- Modello Acque Alte: modellazione del reticolo delle acque alte nella quale sono inseriti anche le immissioni delle acque basse;
- Modello Acque Basse: modellazione idraulica del reticolo delle acque basse.

Gli idrogrammi di piena propri delle acque alte sono calcolati con un K_r globale mentre per le immissioni delle acque basse nel reticolo acque alte si è deciso di utilizzare un K_r con area costante pari a 488.80 kmq (area totale del bacino del Ombrone P.se), ritenendo troppo gravoso utilizzare un K_r globale per entrambe.

Per l'analisi idrologica propria delle acque basse è stato utilizzato un K_r globale.

Le portate al colmo sono valutate per tempi di ritorno di 30 e 200 anni.

Aggiornamento delle mappe di pericolosità da alluvione e rischio di alluvioni comprensive di battenti e velocità necessarie per l'applicazione della LR 41/2008 ai sensi dell'articolo 4 della legge regionale n. 73 del 27/12/2018 per i Comuni di Pistoia, Agliana, Quarrata, Montale e Serravalle Pistoiese

2 TABULATI ANALISI IDROLOGICA MODELLO PIENE PER MODELLO IDRAULICO ACQUE ALTE

Si riportano nelle seguenti tabelle i risultati della modellazione idrologica con il software PIENE per i bacini idrografici totali al colmo per il modello idraulico Acque Alte.

Aggiornamento delle mappe di pericolosità da alluvione e rischio di alluvioni comprensive di battenti e velocità necessarie per l'applicazione della LR 41/2008 ai sensi dell'articolo 4 della legge regionale n. 73 del 27/12/2018 per i Comuni di Pistoia, Agliana, Quarrata, Montale e Serravalle Pistoiese

Immissione	Area [km ²]	T ritardo [h]	Portata [m ³ /s]	Precipit. [mm]	Deflusso [mm]	Durata critica [h]	Coeff. ragguglio	Defl. unit. [m ³ /s km ²]	CPP a<1h	CPP n<1h	CPP m<1h	CPP a>1h	CPP n>1h	CPP m>1h
IMI_001	2.18	0.70	11.32	61.20	51.65	1.95	0.99	5.20	23.24	0.37	0.21	23.24	0.37	0.21
IMI_002	9.18	0.88	43.94	65.05	54.00	2.23	0.97	4.79	23.35	0.38	0.21	23.35	0.38	0.21
IMI_004	11.89	1.03	55.82	64.98	54.28	2.20	0.96	4.69	23.48	0.37	0.21	23.48	0.37	0.21
IMI_005	10.22	0.81	50.54	62.72	52.70	1.93	0.96	4.94	23.82	0.38	0.21	23.82	0.38	0.21
IMI_006	11.20	0.99	51.29	65.97	55.49	2.21	0.96	4.58	23.83	0.37	0.21	23.83	0.37	0.21
IMI_008	25.94	1.23	108.15	69.16	55.63	2.56	0.92	4.17	23.69	0.37	0.21	23.69	0.37	0.21
IMI_009	26.12	2.29	90.59	77.40	64.05	3.46	0.93	3.47	23.69	0.37	0.21	23.69	0.37	0.21
IMI_010	0.62	0.67	2.25	52.69	46.06	1.18	1.00	3.65	24.12	0.35	0.21	24.12	0.35	0.21
IMI_011	1.15	1.06	5.34	63.77	53.02	2.04	1.00	4.63	24.11	0.35	0.21	24.11	0.35	0.21
IMI_012	1.98	1.87	6.55	81.59	63.50	4.17	0.99	3.30	24.31	0.34	0.21	24.31	0.34	0.21
IMI_013	4.28	0.90	21.18	63.66	53.97	2.00	0.98	4.95	24.36	0.35	0.21	24.36	0.35	0.21
IMI_014	4.94	1.56	20.32	70.10	59.64	2.64	0.98	4.11	24.35	0.35	0.21	24.35	0.35	0.21
IMI_015	0.88	0.93	5.74	62.17	47.17	1.81	1.00	6.49	24.72	0.34	0.21	24.72	0.34	0.21
IMI_016	2.22	1.16	12.27	66.06	48.61	2.21	0.99	5.53	24.54	0.34	0.21	24.54	0.34	0.21
IMI_017	2.57	1.50	11.91	71.54	52.92	2.80	0.99	4.63	24.51	0.34	0.21	24.51	0.34	0.21
IMI_019	7.52	1.72	30.68	72.99	59.25	2.96	0.98	4.08	24.40	0.34	0.21	24.40	0.34	0.21
IMI_020	3.22	0.76	15.48	53.83	46.37	1.22	0.99	4.81	24.44	0.35	0.21	24.44	0.35	0.21
IMI_021	3.49	1.03	15.70	64.93	55.29	2.08	0.99	4.50	24.44	0.35	0.21	24.44	0.35	0.21
IMI_022	3.53	1.33	14.77	67.25	58.08	2.31	0.99	4.18	24.44	0.35	0.21	24.44	0.35	0.21
IMI_023	1.10	0.76	3.68	65.65	58.32	2.16	1.00	3.33	24.42	0.35	0.21	24.42	0.35	0.21
IMI_024	1.36	1.00	4.57	71.40	61.08	2.75	1.00	3.37	24.42	0.35	0.21	24.42	0.35	0.21
IMI_025	1.55	1.38	5.05	75.98	63.24	3.29	0.99	3.25	24.40	0.35	0.21	24.40	0.35	0.21
IMI_026	0.47	0.67	1.69	55.43	48.64	1.30	1.00	3.58	24.59	0.34	0.21	24.59	0.34	0.21
IMI_027	1.82	1.56	6.27	79.18	60.53	3.75	0.99	3.45	24.49	0.34	0.21	24.49	0.34	0.21
IMI_028	0.32	0.63	0.97	56.09	51.84	1.36	1.00	3.05	24.54	0.35	0.21	24.54	0.35	0.21
IMI_029	0.40	0.76	1.24	70.32	61.04	2.61	1.00	3.10	24.55	0.35	0.21	24.55	0.35	0.21
IMI_030	6.88	0.73	39.63	57.50	47.18	1.43	0.97	5.76	24.52	0.37	0.21	24.52	0.37	0.21
IMI_031	12.33	1.07	53.59	67.85	55.41	2.24	0.96	4.35	24.63	0.36	0.21	24.63	0.36	0.21
IMI_032	12.15	0.90	53.87	68.94	57.47	2.21	0.96	4.43	24.84	0.38	0.21	24.84	0.38	0.21

Aggiornamento delle mappe di pericolosità da alluvione e rischio di alluvioni comprensive di battenti e velocità necessarie per l'applicazione della LR 41/2008 ai sensi dell'articolo 4 della legge regionale n. 73 del 27/12/2018 per i Comuni di Pistoia, Agliana, Quarrata, Montale e Serravalle Pistoiese

Immissione	Area [km ²]	T ritardo [h]	Portata [m ³ /s]	Precipit. [mm]	Deflusso [mm]	Durata critica [h]	Coeff. ragguglio	Defl. unit. [m ³ /s km ²]	CPP a<1h	CPP n<1h	CPP m<1h	CPP a>1h	CPP n>1h	CPP m>1h
IMI_033	15.92	1.23	60.80	73.80	60.88	2.67	0.95	3.82	24.83	0.37	0.21	24.83	0.37	0.21
IMI_035	29.68	1.48	106.43	75.49	59.60	2.91	0.92	3.59	24.73	0.37	0.21	24.73	0.37	0.21
IMI_037	30.13	1.77	102.04	77.73	61.80	3.16	0.92	3.39	24.73	0.37	0.21	24.73	0.37	0.21
IMI_039	34.50	2.00	108.36	80.46	63.03	3.53	0.92	3.14	24.68	0.36	0.21	24.68	0.36	0.21
IMI_042	35.40	2.21	108.24	82.89	64.94	3.84	0.92	3.06	24.69	0.36	0.21	24.69	0.36	0.21
IMI_045	36.13	2.30	108.38	85.04	66.33	4.13	0.92	3.00	24.69	0.36	0.21	24.69	0.36	0.21
IMI_047	39.67	2.32	116.80	83.80	64.79	3.99	0.91	2.94	24.67	0.36	0.21	24.67	0.36	0.21
IMI_050	40.32	2.39	117.08	85.59	65.97	4.25	0.91	2.90	24.67	0.36	0.21	24.67	0.36	0.21
IMI_052	47.87	2.55	135.24	85.34	65.12	4.29	0.90	2.83	24.66	0.36	0.21	24.66	0.36	0.21
IMI_055	49.03	2.70	134.78	87.95	66.91	4.68	0.90	2.75	24.66	0.36	0.21	24.66	0.36	0.21
IMI_057	51.02	2.68	137.08	88.79	66.72	4.81	0.90	2.69	24.65	0.36	0.21	24.65	0.36	0.21
IMI_060	52.82	2.83	139.91	90.08	68.06	5.03	0.90	2.65	24.65	0.36	0.21	24.65	0.36	0.21
IMI_063	53.27	2.87	140.00	90.46	68.36	5.10	0.90	2.63	24.65	0.36	0.21	24.65	0.36	0.21
IMI_066	53.61	3.03	138.32	91.91	69.63	5.33	0.90	2.58	24.65	0.36	0.21	24.65	0.36	0.21
IMI_069	55.44	3.19	139.75	92.13	69.71	5.40	0.90	2.52	24.65	0.35	0.21	24.65	0.35	0.21
IMI_072	56.25	3.34	139.60	92.11	69.73	5.43	0.90	2.48	24.65	0.35	0.21	24.65	0.35	0.21
IMI_074	82.37	3.01	211.25	88.45	65.46	4.88	0.87	2.56	24.34	0.36	0.21	24.34	0.36	0.21
IMI_077	91.76	3.96	209.70	93.48	69.95	5.78	0.87	2.29	24.33	0.36	0.21	24.33	0.36	0.21
IMI_078	1.33	0.89	9.56	58.28	51.26	1.43	0.99	7.17	24.84	0.36	0.21	24.84	0.36	0.21
IMI_079	5.94	1.80	30.32	67.78	60.48	2.26	0.98	5.11	24.71	0.35	0.21	24.71	0.35	0.21
IMI_080	8.56	0.96	70.11	54.85	50.13	1.14	0.97	8.19	25.37	0.38	0.21	25.37	0.38	0.21
IMI_081	14.27	1.28	94.41	60.83	53.54	1.52	0.95	6.61	25.26	0.38	0.21	25.26	0.38	0.21
IMI_082	16.97	2.41	81.52	72.05	64.04	2.43	0.95	4.80	25.19	0.37	0.21	25.19	0.37	0.21
IMI_084	23.38	2.28	106.48	73.75	64.13	2.66	0.93	4.55	25.08	0.37	0.21	25.08	0.37	0.21
IMI_085	23.54	3.63	87.35	81.34	71.80	3.48	0.94	3.71	25.08	0.36	0.21	25.08	0.36	0.21
IMI_088	23.77	4.82	76.02	86.52	76.69	4.13	0.94	3.20	25.08	0.36	0.21	25.08	0.36	0.21
IMI_091	24.53	4.79	77.53	87.91	77.83	4.35	0.94	3.16	25.06	0.36	0.21	25.06	0.36	0.21
IMI_094	33.77	4.69	98.58	88.95	77.96	4.74	0.93	2.92	24.94	0.35	0.21	24.94	0.35	0.21
IMI_097	35.81	4.84	102.35	89.66	78.52	4.89	0.92	2.86	24.88	0.35	0.21	24.88	0.35	0.21

Aggiornamento delle mappe di pericolosità da alluvione e rischio di alluvioni comprensive di battenti e velocità necessarie per l'applicazione della LR 41/2008 ai sensi dell'articolo 4 della legge regionale n. 73 del 27/12/2018 per i Comuni di Pistoia, Agliana, Quarrata, Montale e Serravalle Pistoiese

Immissione	Area [km ²]	T ritardo [h]	Portata [m ³ /s]	Precipit. [mm]	Deflusso [mm]	Durata critica [h]	Coeff. ragguglio	Defl. unit. [m ³ /s km ²]	CPP a<1h	CPP n<1h	CPP m<1h	CPP a>1h	CPP n>1h	CPP m>1h
IMI_100	35.93	5.02	100.86	89.12	78.08	4.82	0.92	2.81	24.88	0.35	0.21	24.88	0.35	0.21
IMI_103	36.96	5.05	102.23	90.78	79.41	5.11	0.92	2.77	24.86	0.35	0.21	24.86	0.35	0.21
IMI_106	37.37	5.08	102.18	90.87	79.51	5.14	0.92	2.73	24.86	0.35	0.21	24.86	0.35	0.21
IMI_109	37.40	5.20	101.23	91.65	80.17	5.26	0.92	2.71	24.86	0.35	0.21	24.86	0.35	0.21
IMI_112	41.72	5.70	105.83	93.90	81.96	5.76	0.92	2.54	24.78	0.35	0.21	24.78	0.35	0.21
IMI_115	46.04	6.00	107.78	95.03	79.42	6.09	0.92	2.34	24.77	0.34	0.21	24.77	0.34	0.21
IMI_118	46.36	6.14	106.38	94.11	78.02	5.93	0.92	2.29	24.77	0.34	0.21	24.77	0.34	0.21
IMI_121	47.33	6.30	105.15	94.98	77.32	6.10	0.92	2.22	24.77	0.34	0.21	24.77	0.34	0.21
IMI_124	49.51	6.38	104.43	95.40	74.78	6.25	0.91	2.11	24.78	0.34	0.21	24.78	0.34	0.21
IMI_126	141.30	4.85	297.40	96.64	70.69	6.39	0.86	2.10	24.46	0.35	0.22	24.46	0.35	0.22
IMI_127	31.02	1.24	124.39	92.26	66.19	4.02	0.93	4.01	25.66	0.40	0.21	25.66	0.40	0.21
IMI_128	32.33	1.46	121.90	94.44	68.75	4.28	0.93	3.77	25.65	0.40	0.21	25.65	0.40	0.21
IMI_129	13.22	1.05	53.59	93.31	69.16	4.08	0.97	4.05	25.22	0.42	0.21	25.22	0.42	0.21
IMI_130	13.76	1.25	51.85	94.31	70.24	4.20	0.96	3.77	25.22	0.42	0.21	25.22	0.42	0.21
IMI_132	46.33	1.46	165.48	96.74	68.73	4.54	0.91	3.57	25.56	0.40	0.21	25.56	0.40	0.21
IMI_133	0.34	0.55	0.70	83.53	74.45	3.50	1.00	2.02	24.98	0.39	0.21	24.98	0.39	0.21
IMI_134	0.56	0.83	1.16	91.87	65.57	4.53	1.00	2.09	25.05	0.38	0.21	25.05	0.38	0.21
IMI_136	47.67	2.02	152.17	102.98	75.32	5.34	0.92	3.19	25.55	0.40	0.21	25.55	0.40	0.21
IMI_137	4.46	1.15	12.87	81.17	63.60	3.33	0.99	2.89	25.08	0.38	0.21	25.08	0.38	0.21
IMI_138	4.61	1.30	12.51	82.13	64.07	3.43	0.99	2.72	25.07	0.38	0.21	25.07	0.38	0.21
IMI_139	4.27	0.71	14.21	76.86	67.24	2.82	0.99	3.33	25.17	0.38	0.21	25.17	0.38	0.21
IMI_140	5.49	1.06	16.13	81.91	68.44	3.39	0.98	2.94	25.13	0.38	0.21	25.13	0.38	0.21
IMI_142	10.81	1.57	27.21	85.61	67.14	3.84	0.97	2.52	25.08	0.38	0.21	25.08	0.38	0.21
IMI_144	58.88	1.97	174.51	101.83	74.00	5.34	0.90	2.96	25.47	0.40	0.21	25.47	0.40	0.21
IMI_145	1.09	0.78	4.40	72.00	54.79	2.55	1.00	4.06	24.93	0.36	0.21	24.93	0.36	0.21
IMI_146	1.17	0.87	4.42	73.80	54.55	2.73	1.00	3.77	24.92	0.36	0.21	24.92	0.36	0.21
IMI_147	0.94	0.84	4.54	70.25	46.94	2.45	1.00	4.85	24.87	0.35	0.21	24.87	0.35	0.21
IMI_149	3.44	1.16	11.90	77.62	48.47	3.22	0.99	3.46	24.82	0.36	0.21	24.82	0.36	0.21
IMI_151	62.54	2.07	177.80	102.79	73.84	5.53	0.90	2.84	25.42	0.39	0.21	25.42	0.39	0.21

Aggiornamento delle mappe di pericolosità da alluvione e rischio di alluvioni comprensive di battenti e velocità necessarie per l'applicazione della LR 41/2008 ai sensi dell'articolo 4 della legge regionale n. 73 del 27/12/2018 per i Comuni di Pistoia, Agliana, Quarrata, Montale e Serravalle Pistoiese

Immissione	Area [km ²]	T ritardo [h]	Portata [m ³ /s]	Precipit. [mm]	Deflusso [mm]	Durata critica [h]	Coeff. ragguglio	Defl. unit. [m ³ /s km ²]	CPP a<1h	CPP n<1h	CPP m<1h	CPP a>1h	CPP n>1h	CPP m>1h
IMI_152	19.87	1.14	69.72	86.09	68.01	3.69	0.95	3.51	25.27	0.39	0.21	25.27	0.39	0.21
IMI_153	21.53	1.52	68.26	90.04	70.21	4.21	0.95	3.17	25.23	0.38	0.21	25.23	0.38	0.21
IMI_155	84.32	3.75	198.02	114.11	85.90	7.37	0.90	2.35	25.41	0.39	0.21	25.41	0.39	0.21
IMI_158	96.14	6.01	178.47	123.40	89.41	9.43	0.90	1.86	25.33	0.38	0.21	25.33	0.38	0.21
IMI_160	237.47	5.42	440.03	107.33	75.96	7.65	0.86	1.85	24.52	0.36	0.22	24.52	0.36	0.22
IMI_163	237.57	5.51	437.81	107.91	76.45	7.76	0.86	1.84	24.52	0.36	0.22	24.52	0.36	0.22
IMI_166	237.64	5.63	434.96	108.63	77.06	7.91	0.86	1.83	24.52	0.36	0.22	24.52	0.36	0.22
IMI_169	252.13	5.68	453.88	108.58	76.91	8.03	0.86	1.80	24.44	0.36	0.22	24.44	0.36	0.22
IMI_172	252.61	5.86	448.70	109.58	77.66	8.26	0.86	1.78	24.44	0.36	0.22	24.44	0.36	0.22
IMI_175	252.83	6.08	443.13	109.28	77.55	8.20	0.86	1.75	24.44	0.36	0.22	24.44	0.36	0.22
IMI_178	253.00	6.25	439.02	110.25	78.34	8.39	0.86	1.74	24.44	0.36	0.22	24.44	0.36	0.22
IMI_181	280.17	6.15	470.64	109.00	77.06	8.39	0.86	1.68	24.31	0.36	0.21	24.31	0.36	0.21
IMI_182	16.52	5.41	8.97	119.84	105.14	16.71	0.97	0.54	24.38	0.31	0.21	24.38	0.31	0.21
IMI_183	16.54	5.60	8.90	120.07	105.61	16.84	0.97	0.54	24.38	0.31	0.21	24.38	0.31	0.21
IMI_186	18.36	5.82	9.61	120.36	106.15	17.15	0.97	0.52	24.36	0.31	0.21	24.36	0.31	0.21
IMI_189	18.88	6.06	10.01	122.54	107.67	18.23	0.97	0.53	24.36	0.31	0.21	24.36	0.31	0.21
IMI_192	18.90	6.16	9.98	122.63	107.87	18.29	0.97	0.53	24.36	0.31	0.21	24.36	0.31	0.21
IMI_195	23.76	6.12	13.82	120.47	104.26	17.42	0.97	0.58	24.45	0.31	0.21	24.45	0.31	0.21
IMI_198	23.84	6.17	13.80	120.45	104.18	17.40	0.97	0.58	24.45	0.31	0.21	24.45	0.31	0.21
IMI_201	24.20	6.36	14.06	120.22	103.88	17.34	0.97	0.58	24.45	0.31	0.21	24.45	0.31	0.21
IMI_204	26.24	6.42	15.70	120.79	102.86	17.84	0.96	0.60	24.45	0.30	0.21	24.45	0.30	0.21
IMI_207	26.52	6.47	15.97	120.50	102.38	17.73	0.96	0.60	24.44	0.30	0.21	24.44	0.30	0.21
IMI_211	26.98	6.55	16.54	121.91	102.66	18.47	0.96	0.61	24.43	0.30	0.21	24.43	0.30	0.21
IMI_213	307.19	6.49	466.79	109.46	75.06	8.80	0.86	1.52	24.17	0.35	0.21	24.17	0.35	0.21
IMI_216	307.32	6.55	465.44	109.73	75.30	8.86	0.86	1.51	24.17	0.35	0.21	24.17	0.35	0.21
IMI_217	1.99	0.95	13.10	63.19	40.90	1.79	0.99	6.57	25.33	0.33	0.21	25.33	0.33	0.21
IMI_218	4.72	1.08	30.94	61.83	42.18	1.69	0.98	6.56	25.25	0.33	0.21	25.25	0.33	0.21
IMI_219	4.31	1.05	32.20	55.83	41.32	1.29	0.98	7.46	25.00	0.31	0.21	25.00	0.31	0.21
IMI_220	4.31	1.05	32.13	55.90	41.46	1.30	0.98	7.45	25.00	0.31	0.21	25.00	0.31	0.21

Aggiornamento delle mappe di pericolosità da alluvione e rischio di alluvioni comprensive di battenti e velocità necessarie per l'applicazione della LR 41/2008 ai sensi dell'articolo 4 della legge regionale n. 73 del 27/12/2018 per i Comuni di Pistoia, Agliana, Quarrata, Montale e Serravalle Pistoiese

Immissione	Area [km ²]	T ritardo [h]	Portata [m ³ /s]	Precipit. [mm]	Deflusso [mm]	Durata critica [h]	Coeff. ragguglio	Defl. unit. [m ³ /s km ²]	CPP a<1h	CPP n<1h	CPP m<1h	CPP a>1h	CPP n>1h	CPP m>1h
IMI_222	11.49	1.13	73.46	61.13	41.89	1.67	0.96	6.40	25.09	0.33	0.21	25.09	0.33	0.21
IMI_223	12.48	1.70	66.65	65.91	47.92	2.12	0.96	5.34	25.04	0.33	0.21	25.04	0.33	0.21
IMI_224	0.56	0.62	5.30	50.45	35.27	1.00	1.00	9.48	24.52	0.32	0.21	24.52	0.32	0.21
IMI_225	1.49	0.96	11.23	54.70	37.69	1.31	0.99	7.55	24.35	0.33	0.21	24.35	0.33	0.21
IMI_227	14.09	2.45	61.97	71.79	54.27	2.77	0.96	4.40	24.95	0.33	0.21	24.95	0.33	0.21
IMI_230	15.27	2.46	64.06	73.83	54.81	3.04	0.96	4.20	24.91	0.33	0.21	24.91	0.33	0.21
IMI_233	15.99	2.88	61.14	76.59	57.95	3.40	0.96	3.82	24.89	0.33	0.21	24.89	0.33	0.21
IMI_236	21.67	3.12	71.09	82.33	55.88	4.28	0.95	3.28	24.81	0.33	0.21	24.81	0.33	0.21
IMI_237	3.57	1.09	24.79	55.70	39.18	1.37	0.99	6.94	24.55	0.31	0.21	24.55	0.31	0.21
IMI_238	4.33	1.21	27.41	57.68	39.17	1.53	0.98	6.33	24.53	0.31	0.21	24.53	0.31	0.21
IMI_239	4.35	1.41	25.67	59.50	41.15	1.69	0.98	5.90	24.53	0.31	0.21	24.53	0.31	0.21
IMI_242	5.24	1.54	27.48	62.34	40.47	1.97	0.98	5.25	24.52	0.31	0.21	24.52	0.31	0.21
IMI_244	26.94	3.05	85.19	84.09	56.79	4.66	0.94	3.16	24.76	0.33	0.21	24.76	0.33	0.21
IMI_247	27.74	3.68	79.11	88.08	60.62	5.38	0.94	2.85	24.75	0.33	0.21	24.75	0.33	0.21
IMI_248	3.34	0.83	25.22	54.14	36.59	1.27	0.99	7.56	24.51	0.30	0.21	24.51	0.30	0.21
IMI_249	4.68	1.09	29.09	58.53	38.58	1.65	0.98	6.21	24.45	0.30	0.21	24.45	0.30	0.21
IMI_250	4.84	1.28	27.95	60.63	41.10	1.85	0.98	5.77	24.45	0.30	0.21	24.45	0.30	0.21
IMI_251	1.11	0.84	8.22	53.56	35.56	1.24	1.00	7.37	24.42	0.30	0.21	24.42	0.30	0.21
IMI_252	1.18	1.04	7.83	56.11	38.44	1.45	1.00	6.65	24.41	0.30	0.21	24.41	0.30	0.21
IMI_254	6.05	1.52	32.21	62.18	43.69	2.01	0.98	5.32	24.45	0.30	0.21	24.45	0.30	0.21
IMI_255	0.31	0.57	2.82	50.59	27.91	1.04	1.00	9.02	24.26	0.30	0.21	24.26	0.30	0.21
IMI_256	1.10	1.58	5.59	61.83	38.26	2.03	1.00	5.07	24.15	0.31	0.21	24.15	0.31	0.21
IMI_258	7.44	1.84	34.52	65.78	45.39	2.43	0.97	4.64	24.40	0.30	0.21	24.40	0.30	0.21
IMI_261	7.86	1.96	35.01	66.21	45.58	2.49	0.97	4.46	24.39	0.30	0.21	24.39	0.30	0.21
IMI_263	35.60	3.41	102.18	86.94	59.45	5.35	0.93	2.87	24.69	0.32	0.21	24.69	0.32	0.21
IMI_264	2.38	0.92	16.79	53.81	36.64	1.28	0.99	7.07	24.30	0.30	0.21	24.30	0.30	0.21
IMI_265	1.09	0.84	8.28	52.98	35.85	1.21	1.00	7.59	24.39	0.29	0.21	24.39	0.29	0.21
IMI_267	3.60	1.34	21.18	58.26	42.18	1.68	0.99	5.88	24.32	0.29	0.21	24.32	0.29	0.21
IMI_268	0.53	0.81	3.88	55.10	31.40	1.40	1.00	7.33	24.21	0.30	0.21	24.21	0.30	0.21

Aggiornamento delle mappe di pericolosità da alluvione e rischio di alluvioni comprensive di battenti e velocità necessarie per l'applicazione della LR 41/2008 ai sensi dell'articolo 4 della legge regionale n. 73 del 27/12/2018 per i Comuni di Pistoia, Agliana, Quarrata, Montale e Serravalle Pistoiese

Immissione	Area [km ²]	T ritardo [h]	Portata [m ³ /s]	Precipit. [mm]	Deflusso [mm]	Durata critica [h]	Coeff. ragguglio	Defl. unit. [m ³ /s km ²]	CPP a<1h	CPP n<1h	CPP m<1h	CPP a>1h	CPP n>1h	CPP m>1h
IMI_269	0.82	1.30	4.86	57.14	34.88	1.58	1.00	5.95	24.19	0.30	0.21	24.19	0.30	0.21
IMI_270	2.54	0.88	18.46	53.58	34.86	1.26	0.99	7.28	24.38	0.29	0.21	24.38	0.29	0.21
IMI_271	2.74	1.12	17.58	56.20	37.32	1.49	0.99	6.42	24.36	0.29	0.21	24.36	0.29	0.21
IMI_273	3.66	1.50	19.96	59.47	39.65	1.81	0.99	5.46	24.31	0.29	0.21	24.31	0.29	0.21
IMI_275	7.27	1.46	40.06	59.76	41.17	1.83	0.97	5.51	24.32	0.29	0.21	24.32	0.29	0.21
IMI_277	42.90	3.25	122.37	84.73	57.80	5.08	0.91	2.85	24.61	0.32	0.21	24.61	0.32	0.21
IMI_280	43.25	3.29	122.75	84.11	57.19	4.97	0.91	2.84	24.60	0.32	0.21	24.60	0.32	0.21
IMI_283	44.39	3.45	123.33	84.27	56.97	5.02	0.91	2.78	24.58	0.32	0.21	24.58	0.32	0.21
IMI_286	44.45	3.49	122.93	84.54	57.24	5.08	0.91	2.77	24.58	0.32	0.21	24.58	0.32	0.21
IMI_287	2.51	0.93	17.33	54.42	36.26	1.34	0.99	6.89	24.34	0.28	0.21	24.34	0.28	0.21
IMI_288	2.88	1.73	14.42	61.58	44.28	2.08	0.99	5.00	24.29	0.29	0.21	24.29	0.29	0.21
IMI_290	47.35	3.59	128.25	84.96	57.47	5.22	0.91	2.71	24.56	0.31	0.21	24.56	0.31	0.21
IMI_293	48.55	3.58	130.26	85.74	57.97	5.39	0.91	2.68	24.55	0.31	0.21	24.55	0.31	0.21
IMI_296	48.87	4.16	123.68	87.72	60.59	5.80	0.91	2.53	24.54	0.31	0.21	24.54	0.31	0.21
IMI_299	49.56	4.20	124.08	87.90	60.71	5.86	0.91	2.50	24.53	0.31	0.21	24.53	0.31	0.21
IMI_300	2.73	1.06	16.84	56.93	34.23	1.62	0.99	6.17	24.10	0.29	0.21	24.10	0.29	0.21
IMI_301	3.97	1.57	19.58	62.15	38.36	2.17	0.99	4.94	24.07	0.29	0.21	24.07	0.29	0.21
IMI_303	53.58	4.65	125.19	90.34	62.98	6.46	0.91	2.34	24.50	0.31	0.21	24.50	0.31	0.21
IMI_304	1.11	0.93	3.51	78.37	39.03	4.97	1.00	3.17	24.16	0.28	0.21	24.16	0.28	0.21
IMI_305	2.61	1.27	7.13	82.47	35.99	5.81	0.99	2.73	24.06	0.29	0.21	24.06	0.29	0.21
IMI_306	3.21	2.20	7.60	88.46	45.60	7.38	0.99	2.37	24.20	0.29	0.21	24.20	0.29	0.21
IMI_308	56.84	5.00	124.65	92.12	63.96	6.97	0.91	2.19	24.49	0.31	0.21	24.49	0.31	0.21
IMI_309	4.25	0.87	13.97	71.68	49.68	3.83	0.99	3.29	24.16	0.27	0.21	24.16	0.27	0.21
IMI_310	3.41	0.90	12.14	71.00	45.17	3.74	0.99	3.56	24.02	0.27	0.21	24.02	0.27	0.21
IMI_312	10.14	1.49	28.40	76.36	49.33	4.73	0.97	2.80	24.35	0.27	0.21	24.35	0.27	0.21
IMI_313	10.18	1.88	26.52	77.93	51.94	5.07	0.97	2.60	24.35	0.27	0.21	24.35	0.27	0.21
IMI_315	67.12	5.45	131.22	95.70	66.59	8.21	0.90	1.96	24.46	0.30	0.21	24.46	0.30	0.21
IMI_316	2.48	0.84	8.88	75.41	40.17	4.50	0.99	3.59	23.92	0.28	0.21	23.92	0.28	0.21
IMI_317	2.85	1.50	7.98	80.35	47.46	5.65	0.99	2.80	23.92	0.28	0.21	23.92	0.28	0.21

Aggiornamento delle mappe di pericolosità da alluvione e rischio di alluvioni comprensive di battenti e velocità necessarie per l'applicazione della LR 41/2008 ai sensi dell'articolo 4 della legge regionale n. 73 del 27/12/2018 per i Comuni di Pistoia, Agliana, Quarrata, Montale e Serravalle Pistoiese

Immissione	Area [km ²]	T ritardo [h]	Portata [m ³ /s]	Precipit. [mm]	Deflusso [mm]	Durata critica [h]	Coeff. ragguglio	Defl. unit. [m ³ /s km ²]	CPP a<1h	CPP n<1h	CPP m<1h	CPP a>1h	CPP n>1h	CPP m>1h
IMI_319	70.01	5.56	131.58	97.12	67.93	8.69	0.90	1.88	24.42	0.30	0.21	24.42	0.30	0.21
IMI_321	377.39	6.74	575.47	110.78	76.50	9.64	0.86	1.52	24.14	0.34	0.21	24.14	0.34	0.21
IMI_324	389.97	6.74	586.25	110.19	76.60	9.68	0.86	1.50	24.11	0.34	0.21	24.11	0.34	0.21
IMI_327	390.07	6.80	583.38	110.43	76.84	9.75	0.87	1.50	24.11	0.34	0.21	24.11	0.34	0.21
IMI_330	399.43	6.80	581.56	110.17	75.97	9.77	0.86	1.46	24.10	0.34	0.21	24.10	0.34	0.21
IMI_333	399.49	7.01	575.51	111.21	76.94	10.03	0.87	1.44	24.10	0.34	0.21	24.10	0.34	0.21
IMI_336	402.91	7.11	574.19	111.46	77.41	10.18	0.87	1.43	24.09	0.33	0.21	24.09	0.33	0.21
IMI_339	425.14	7.16	606.31	110.78	75.95	10.21	0.87	1.43	24.09	0.33	0.20	24.09	0.33	0.20
IMI_342	438.37	7.14	610.49	111.73	76.83	10.58	0.87	1.39	24.07	0.33	0.20	24.07	0.33	0.20
IMI_345	439.52	7.47	601.60	113.17	78.22	11.00	0.87	1.37	24.07	0.33	0.20	24.07	0.33	0.20
IMI_348	441.67	7.46	600.33	113.00	78.02	11.00	0.87	1.36	24.06	0.33	0.20	24.06	0.33	0.20
IMI_351	441.93	7.54	598.23	113.40	78.38	11.11	0.87	1.35	24.06	0.33	0.20	24.06	0.33	0.20
IMI_355	442.45	7.65	596.07	112.36	77.69	10.82	0.87	1.35	24.06	0.33	0.20	24.06	0.33	0.20
IMI_358	442.99	7.78	591.22	112.87	78.11	10.99	0.87	1.33	24.06	0.33	0.20	24.06	0.33	0.20
IMI_361	443.00	7.81	590.71	112.97	78.20	11.02	0.87	1.33	24.06	0.33	0.20	24.06	0.33	0.20
IMI_364	453.40	8.17	594.45	114.16	78.73	11.49	0.87	1.31	24.05	0.33	0.20	24.05	0.33	0.20
IMI_367	475.08	9.15	577.84	115.34	79.77	12.28	0.88	1.22	24.01	0.32	0.20	24.01	0.32	0.20
IMI_368	488.80	9.28	583.29	116.23	80.86	12.48	0.88	1.19	24.02	0.32	0.20	24.02	0.32	0.20
IMI_369	32.30	1.81	106.35	79.22	62.23	3.35	0.92	3.29	24.70	0.37	0.21	24.70	0.37	0.21
IMI_371	33.87	1.91	108.09	80.39	63.00	3.51	0.92	3.19	24.68	0.36	0.21	24.68	0.36	0.21
IMI_374	12.85	1.69	27.44	70.71	57.15	4.99	0.97	2.14	24.22	0.26	0.21	24.22	0.26	0.21

Tabella 2-1 – Tabulati analisi idrologica al colmo immissioni Acque Alte TR 30 anni

Aggiornamento delle mappe di pericolosità da alluvione e rischio di alluvioni comprensive di battenti e velocità necessarie per l'applicazione della LR 41/2008 ai sensi dell'articolo 4 della legge regionale n. 73 del 27/12/2018 per i Comuni di Pistoia, Agliana, Quarrata, Montale e Serravalle Pistoiese

Immissione	Area [km ²]	T ritardo [h]	Portata [m ³ /s]	Precipit. [mm]	Deflusso [mm]	Durata critica [h]	Coeff. ragguglio	Defl. unit. [m ³ /s km ²]	CPP a<1h	CPP n<1h	CPP m<1h	CPP a>1h	CPP n>1h	CPP m>1h
IMI_001	2.18	0.70	24.46	76.81	67.88	1.22	0.99	11.22	23.24	0.37	0.21	23.24	0.37	0.21
IMI_002	9.18	0.88	89.64	84.56	72.40	1.54	0.96	9.77	23.35	0.38	0.21	23.35	0.38	0.21
IMI_004	11.89	1.03	108.66	87.75	75.51	1.68	0.95	9.14	23.48	0.37	0.21	23.48	0.37	0.21
IMI_005	10.22	0.81	107.39	82.21	71.75	1.36	0.96	10.51	23.82	0.38	0.21	23.82	0.38	0.21
IMI_006	11.20	0.99	106.65	85.92	75.05	1.53	0.96	9.52	23.83	0.37	0.21	23.83	0.37	0.21
IMI_008	25.94	1.23	205.75	92.81	76.93	1.91	0.91	7.93	23.69	0.37	0.21	23.69	0.37	0.21
IMI_009	26.12	2.29	159.64	104.28	88.93	2.62	0.92	6.11	23.69	0.37	0.21	23.69	0.37	0.21
IMI_010	0.62	0.67	6.22	85.21	72.12	1.48	1.00	10.08	24.12	0.35	0.21	24.12	0.35	0.21
IMI_011	1.15	1.06	10.96	87.28	75.90	1.59	1.00	9.51	24.11	0.35	0.21	24.11	0.35	0.21
IMI_012	1.98	1.87	13.30	103.87	85.73	2.60	0.99	6.70	24.31	0.34	0.21	24.31	0.34	0.21
IMI_013	4.28	0.90	44.42	82.15	72.95	1.30	0.98	10.38	24.36	0.35	0.21	24.36	0.35	0.21
IMI_014	4.94	1.56	39.75	91.83	81.93	1.80	0.98	8.05	24.35	0.35	0.21	24.35	0.35	0.21
IMI_015	0.88	0.93	10.04	84.13	68.99	1.35	1.00	11.36	24.72	0.34	0.21	24.72	0.34	0.21
IMI_016	2.22	1.16	21.88	89.32	71.37	1.64	0.99	9.85	24.54	0.34	0.21	24.54	0.34	0.21
IMI_017	2.57	1.50	21.74	94.95	75.73	1.97	0.99	8.46	24.51	0.34	0.21	24.51	0.34	0.21
IMI_019	7.52	1.72	57.66	96.30	82.50	2.06	0.97	7.66	24.40	0.34	0.21	24.40	0.34	0.21
IMI_020	3.22	0.76	35.34	81.78	71.44	1.27	0.99	10.97	24.44	0.35	0.21	24.44	0.35	0.21
IMI_021	3.49	1.03	34.00	85.86	75.86	1.46	0.99	9.75	24.44	0.35	0.21	24.44	0.35	0.21
IMI_022	3.53	1.33	30.62	90.71	81.36	1.71	0.99	8.67	24.44	0.35	0.21	24.44	0.35	0.21
IMI_023	1.10	0.76	10.61	91.24	79.68	1.74	1.00	9.61	24.42	0.35	0.21	24.42	0.35	0.21
IMI_024	1.36	1.00	11.95	94.72	82.81	1.95	0.99	8.81	24.42	0.35	0.21	24.42	0.35	0.21
IMI_025	1.55	1.38	11.88	98.56	86.06	2.19	0.99	7.65	24.40	0.35	0.21	24.40	0.35	0.21
IMI_026	0.47	0.67	4.92	87.75	74.80	1.54	1.00	10.43	24.59	0.34	0.21	24.59	0.34	0.21
IMI_027	1.82	1.56	13.38	102.40	82.59	2.45	0.99	7.36	24.49	0.34	0.21	24.49	0.34	0.21
IMI_028	0.32	0.63	3.28	89.37	76.12	1.63	1.00	10.32	24.54	0.35	0.21	24.54	0.35	0.21
IMI_029	0.40	0.76	3.82	91.58	77.80	1.75	1.00	9.59	24.55	0.35	0.21	24.55	0.35	0.21
IMI_030	6.88	0.73	83.63	79.79	68.44	1.17	0.97	12.16	24.52	0.37	0.21	24.52	0.37	0.21

Aggiornamento delle mappe di pericolosità da alluvione e rischio di alluvioni comprensive di battenti e velocità necessarie per l'applicazione della LR 41/2008 ai sensi dell'articolo 4 della legge regionale n. 73 del 27/12/2018 per i Comuni di Pistoia, Agliana, Quarrata, Montale e Serravalle Pistoiese

Immissione	Area [km ²]	T ritardo [h]	Portata [m ³ /s]	Precipit. [mm]	Deflusso [mm]	Durata critica [h]	Coeff. ragguglio	Defl. unit. [m ³ /s km ²]	CPP a<1h	CPP n<1h	CPP m<1h	CPP a>1h	CPP n>1h	CPP m>1h
IMI_031	12.33	1.07	113.39	91.90	77.68	1.70	0.96	9.19	24.63	0.36	0.21	24.63	0.36	0.21
IMI_032	12.15	0.90	123.71	90.73	78.28	1.58	0.96	10.18	24.84	0.38	0.21	24.84	0.38	0.21
IMI_033	15.92	1.23	133.28	98.92	84.40	1.99	0.95	8.37	24.83	0.37	0.21	24.83	0.37	0.21
IMI_035	29.68	1.48	216.64	103.84	84.92	2.33	0.92	7.30	24.73	0.37	0.21	24.73	0.37	0.21
IMI_037	30.13	1.77	202.71	107.68	88.85	2.56	0.92	6.73	24.73	0.37	0.21	24.73	0.37	0.21
IMI_039	34.50	2.00	212.36	110.32	89.79	2.78	0.91	6.16	24.68	0.36	0.21	24.68	0.36	0.21
IMI_042	35.40	2.21	208.74	112.44	91.60	2.94	0.91	5.90	24.69	0.36	0.21	24.69	0.36	0.21
IMI_045	36.13	2.30	207.48	114.03	92.63	3.06	0.91	5.74	24.69	0.36	0.21	24.69	0.36	0.21
IMI_047	39.67	2.32	220.65	113.93	91.70	3.07	0.90	5.56	24.67	0.36	0.21	24.67	0.36	0.21
IMI_050	40.32	2.39	220.62	115.00	92.37	3.16	0.90	5.47	24.67	0.36	0.21	24.67	0.36	0.21
IMI_052	47.87	2.55	247.14	115.06	91.37	3.21	0.89	5.16	24.66	0.36	0.21	24.66	0.36	0.21
IMI_055	49.03	2.70	245.28	115.47	91.48	3.25	0.89	5.00	24.66	0.36	0.21	24.66	0.36	0.21
IMI_057	51.02	2.68	248.32	116.96	91.68	3.37	0.89	4.87	24.65	0.36	0.21	24.65	0.36	0.21
IMI_060	52.82	2.83	253.00	117.14	92.12	3.40	0.89	4.79	24.65	0.36	0.21	24.65	0.36	0.21
IMI_063	53.27	2.87	252.37	121.29	95.58	3.75	0.89	4.74	24.65	0.36	0.21	24.65	0.36	0.21
IMI_066	53.61	3.03	248.18	123.46	97.58	3.95	0.89	4.63	24.65	0.36	0.21	24.65	0.36	0.21
IMI_069	55.44	3.19	249.97	127.21	100.52	4.31	0.89	4.51	24.65	0.35	0.21	24.65	0.35	0.21
IMI_072	56.25	3.34	247.07	127.17	100.49	4.33	0.89	4.39	24.65	0.35	0.21	24.65	0.35	0.21
IMI_074	82.37	3.01	364.49	127.14	97.83	4.37	0.87	4.43	24.34	0.36	0.21	24.34	0.36	0.21
IMI_077	91.76	3.96	362.24	135.35	105.20	5.27	0.87	3.95	24.33	0.36	0.21	24.33	0.36	0.21
IMI_078	1.33	0.89	16.58	79.36	72.60	1.11	0.99	12.44	24.84	0.36	0.21	24.84	0.36	0.21
IMI_079	5.94	1.80	50.81	93.97	86.29	1.82	0.98	8.56	24.71	0.35	0.21	24.71	0.35	0.21
IMI_080	8.56	0.96	113.48	78.49	73.11	1.02	0.96	13.26	25.37	0.38	0.21	25.37	0.38	0.21
IMI_081	14.27	1.28	153.95	87.32	78.68	1.36	0.95	10.79	25.26	0.38	0.21	25.26	0.38	0.21
IMI_082	16.97	2.41	131.38	101.13	91.77	2.05	0.95	7.74	25.19	0.37	0.21	25.19	0.37	0.21
IMI_084	23.38	2.28	172.71	104.50	92.73	2.29	0.93	7.39	25.08	0.37	0.21	25.08	0.37	0.21
IMI_085	23.54	3.63	140.28	116.53	104.84	3.09	0.94	5.96	25.08	0.36	0.21	25.08	0.36	0.21
IMI_088	23.77	4.82	121.42	126.32	114.21	3.87	0.94	5.11	25.08	0.36	0.21	25.08	0.36	0.21
IMI_091	24.53	4.79	123.89	125.71	113.48	3.84	0.94	5.05	25.06	0.36	0.21	25.06	0.36	0.21

Aggiornamento delle mappe di pericolosità da alluvione e rischio di alluvioni comprensive di battenti e velocità necessarie per l'applicazione della LR 41/2008 ai sensi dell'articolo 4 della legge regionale n. 73 del 27/12/2018 per i Comuni di Pistoia, Agliana, Quarrata, Montale e Serravalle Pistoiese

Immissione	Area [km ²]	T ritardo [h]	Portata [m ³ /s]	Precipit. [mm]	Deflusso [mm]	Durata critica [h]	Coeff. ragguglio	Defl. unit. [m ³ /s km ²]	CPP a<1h	CPP n<1h	CPP m<1h	CPP a>1h	CPP n>1h	CPP m>1h
IMI_094	33.77	4.69	157.95	127.76	113.76	4.23	0.92	4.68	24.94	0.35	0.21	24.94	0.35	0.21
IMI_097	35.81	4.84	163.97	128.74	114.50	4.37	0.92	4.58	24.88	0.35	0.21	24.88	0.35	0.21
IMI_100	35.93	5.02	161.55	130.38	116.00	4.53	0.92	4.50	24.88	0.35	0.21	24.88	0.35	0.21
IMI_103	36.96	5.05	163.91	130.41	115.80	4.56	0.92	4.44	24.86	0.35	0.21	24.86	0.35	0.21
IMI_106	37.37	5.08	163.85	130.60	115.91	4.59	0.92	4.39	24.86	0.35	0.21	24.86	0.35	0.21
IMI_109	37.40	5.20	162.33	131.71	116.92	4.70	0.92	4.34	24.86	0.35	0.21	24.86	0.35	0.21
IMI_112	41.72	5.70	169.55	135.03	119.57	5.15	0.92	4.06	24.78	0.35	0.21	24.78	0.35	0.21
IMI_115	46.04	6.00	173.49	136.59	116.47	5.42	0.91	3.77	24.77	0.34	0.21	24.77	0.34	0.21
IMI_118	46.36	6.14	171.20	137.60	116.58	5.56	0.91	3.69	24.77	0.34	0.21	24.77	0.34	0.21
IMI_121	47.33	6.30	168.94	138.73	115.35	5.70	0.91	3.57	24.77	0.34	0.21	24.77	0.34	0.21
IMI_124	49.51	6.38	168.23	139.01	111.62	5.80	0.91	3.40	24.78	0.34	0.21	24.78	0.34	0.21
IMI_126	141.30	4.85	501.51	140.57	106.48	5.91	0.86	3.55	24.46	0.35	0.22	24.46	0.35	0.22
IMI_127	31.02	1.24	240.04	120.37	87.64	2.87	0.92	7.74	25.66	0.40	0.21	25.66	0.40	0.21
IMI_128	32.33	1.46	231.68	124.59	91.87	3.13	0.92	7.17	25.65	0.40	0.21	25.65	0.40	0.21
IMI_129	13.22	1.05	108.70	121.77	89.92	2.95	0.96	8.22	25.22	0.42	0.21	25.22	0.42	0.21
IMI_130	13.76	1.25	103.84	124.76	91.89	3.12	0.96	7.55	25.22	0.42	0.21	25.22	0.42	0.21
IMI_132	46.33	1.46	313.79	128.82	91.87	3.41	0.90	6.77	25.56	0.40	0.21	25.56	0.40	0.21
IMI_133	0.34	0.55	1.44	87.10	64.95	1.38	1.00	4.18	24.98	0.39	0.21	24.98	0.39	0.21
IMI_134	0.56	0.83	3.62	141.36	92.59	4.86	1.00	6.51	25.05	0.38	0.21	25.05	0.38	0.21
IMI_136	47.67	2.02	282.58	145.02	107.43	4.60	0.91	5.93	25.55	0.40	0.21	25.55	0.40	0.21
IMI_137	4.46	1.15	28.01	120.39	88.20	3.24	0.99	6.29	25.08	0.38	0.21	25.08	0.38	0.21
IMI_138	4.61	1.30	28.11	135.54	100.56	4.45	0.99	6.10	25.07	0.38	0.21	25.07	0.38	0.21
IMI_139	4.27	0.71	34.23	109.09	89.58	2.46	0.99	8.02	25.17	0.38	0.21	25.17	0.38	0.21
IMI_140	5.49	1.06	36.78	116.59	92.14	2.97	0.98	6.71	25.13	0.38	0.21	25.13	0.38	0.21
IMI_142	10.81	1.57	61.11	135.48	102.78	4.45	0.97	5.65	25.08	0.38	0.21	25.08	0.38	0.21
IMI_144	58.88	1.97	326.98	146.34	106.81	4.84	0.90	5.55	25.47	0.40	0.21	25.47	0.40	0.21
IMI_145	1.09	0.78	9.37	91.65	68.69	1.63	1.00	8.64	24.93	0.36	0.21	24.93	0.36	0.21
IMI_146	1.17	0.87	9.28	93.37	67.65	1.72	1.00	7.93	24.92	0.36	0.21	24.92	0.36	0.21
IMI_147	0.94	0.84	9.03	89.53	63.83	1.56	1.00	9.64	24.87	0.35	0.21	24.87	0.35	0.21

Aggiornamento delle mappe di pericolosità da alluvione e rischio di alluvioni comprensive di battenti e velocità necessarie per l'applicazione della LR 41/2008 ai sensi dell'articolo 4 della legge regionale n. 73 del 27/12/2018 per i Comuni di Pistoia, Agliana, Quarrata, Montale e Serravalle Pistoiese

Immissione	Area [km ²]	T ritardo [h]	Portata [m ³ /s]	Precipit. [mm]	Deflusso [mm]	Durata critica [h]	Coeff. ragguglio	Defl. unit. [m ³ /s km ²]	CPP a<1h	CPP n<1h	CPP m<1h	CPP a>1h	CPP n>1h	CPP m>1h
IMI_149	3.44	1.16	23.67	104.67	66.74	2.41	0.99	6.88	24.82	0.36	0.21	24.82	0.36	0.21
IMI_151	62.54	2.07	331.78	148.11	107.11	5.04	0.90	5.31	25.42	0.39	0.21	25.42	0.39	0.21
IMI_152	19.87	1.14	135.39	118.12	89.72	2.95	0.95	6.81	25.27	0.39	0.21	25.27	0.39	0.21
IMI_153	21.53	1.52	128.93	122.17	92.53	3.27	0.94	5.99	25.23	0.38	0.21	25.23	0.38	0.21
IMI_155	84.32	3.75	351.26	164.60	126.45	6.72	0.89	4.17	25.41	0.39	0.21	25.41	0.39	0.21
IMI_158	96.14	6.01	309.71	182.27	136.71	9.13	0.90	3.22	25.33	0.38	0.21	25.33	0.38	0.21
IMI_160	237.47	5.42	742.19	158.02	115.69	7.33	0.86	3.13	24.52	0.36	0.22	24.52	0.36	0.22
IMI_163	237.57	5.51	738.37	158.95	116.51	7.45	0.86	3.11	24.52	0.36	0.22	24.52	0.36	0.22
IMI_166	237.64	5.63	733.49	160.10	117.55	7.60	0.86	3.09	24.52	0.36	0.22	24.52	0.36	0.22
IMI_169	252.13	5.68	768.36	159.76	117.05	7.69	0.86	3.05	24.44	0.36	0.22	24.44	0.36	0.22
IMI_172	252.61	5.86	759.63	159.11	116.56	7.62	0.86	3.01	24.44	0.36	0.22	24.44	0.36	0.22
IMI_175	252.83	6.08	750.06	161.20	118.44	7.89	0.86	2.97	24.44	0.36	0.22	24.44	0.36	0.22
IMI_178	253.00	6.25	742.95	162.70	119.80	8.10	0.86	2.94	24.44	0.36	0.22	24.44	0.36	0.22
IMI_181	280.17	6.15	792.92	162.62	118.80	8.34	0.86	2.83	24.31	0.36	0.21	24.31	0.36	0.21
IMI_182	16.52	5.41	29.16	196.68	127.85	22.59	0.98	1.77	24.38	0.31	0.21	24.38	0.31	0.21
IMI_183	16.54	5.60	28.91	197.88	129.83	23.04	0.98	1.75	24.38	0.31	0.21	24.38	0.31	0.21
IMI_186	18.36	5.82	31.75	197.51	129.98	23.15	0.98	1.73	24.36	0.31	0.21	24.36	0.31	0.21
IMI_189	18.88	6.06	32.15	198.27	131.97	23.58	0.98	1.70	24.36	0.31	0.21	24.36	0.31	0.21
IMI_192	18.90	6.16	32.04	197.51	131.92	23.29	0.98	1.70	24.36	0.31	0.21	24.36	0.31	0.21
IMI_195	23.76	6.12	39.33	198.79	132.02	24.02	0.97	1.66	24.45	0.31	0.21	24.45	0.31	0.21
IMI_198	23.84	6.17	39.22	199.02	132.39	24.10	0.97	1.65	24.45	0.31	0.21	24.45	0.31	0.21
IMI_201	24.20	6.36	39.31	199.69	133.85	24.40	0.97	1.62	24.45	0.31	0.21	24.45	0.31	0.21
IMI_204	26.24	6.42	42.49	198.27	132.14	24.13	0.97	1.62	24.45	0.30	0.21	24.45	0.30	0.21
IMI_207	26.52	6.47	42.67	199.24	133.16	24.63	0.97	1.61	24.44	0.30	0.21	24.44	0.30	0.21
IMI_211	26.98	6.55	43.11	198.99	133.12	24.61	0.97	1.60	24.43	0.30	0.21	24.43	0.30	0.21
IMI_213	307.19	6.49	795.57	162.10	114.18	8.56	0.86	2.59	24.17	0.35	0.21	24.17	0.35	0.21
IMI_216	307.32	6.55	793.18	162.54	114.60	8.63	0.86	2.58	24.17	0.35	0.21	24.17	0.35	0.21
IMI_217	1.99	0.95	23.47	84.68	61.62	1.29	0.99	11.77	25.33	0.33	0.21	25.33	0.33	0.21
IMI_218	4.72	1.08	53.38	84.16	64.08	1.27	0.98	11.32	25.25	0.33	0.21	25.25	0.33	0.21

Aggiornamento delle mappe di pericolosità da alluvione e rischio di alluvioni comprensive di battenti e velocità necessarie per l'applicazione della LR 41/2008 ai sensi dell'articolo 4 della legge regionale n. 73 del 27/12/2018 per i Comuni di Pistoia, Agliana, Quarrata, Montale e Serravalle Pistoiese

Immissione	Area [km ²]	T ritardo [h]	Portata [m ³ /s]	Precipit. [mm]	Deflusso [mm]	Durata critica [h]	Coeff. ragguglio	Defl. unit. [m ³ /s km ²]	CPP a<1h	CPP n<1h	CPP m<1h	CPP a>1h	CPP n>1h	CPP m>1h
IMI_219	4.31	1.05	53.74	78.19	63.12	1.05	0.98	12.46	25.00	0.31	0.21	25.00	0.31	0.21
IMI_220	4.31	1.05	53.62	78.30	63.31	1.06	0.98	12.43	25.00	0.31	0.21	25.00	0.31	0.21
IMI_222	11.49	1.13	125.31	84.64	64.31	1.32	0.96	10.91	25.09	0.33	0.21	25.09	0.33	0.21
IMI_223	12.48	1.70	111.39	92.04	72.62	1.72	0.96	8.93	25.04	0.33	0.21	25.04	0.33	0.21
IMI_224	0.56	0.62	8.83	69.71	54.79	0.78	1.00	15.80	24.52	0.32	0.21	24.52	0.32	0.21
IMI_225	1.49	0.96	18.56	76.61	59.22	1.07	0.99	12.49	24.35	0.33	0.21	24.35	0.33	0.21
IMI_227	14.09	2.45	102.38	99.86	81.04	2.22	0.95	7.27	24.95	0.33	0.21	24.95	0.33	0.21
IMI_230	15.27	2.46	106.30	101.54	81.05	2.36	0.95	6.96	24.91	0.33	0.21	24.91	0.33	0.21
IMI_233	15.99	2.88	100.87	106.94	86.67	2.76	0.95	6.31	24.89	0.33	0.21	24.89	0.33	0.21
IMI_236	21.67	3.12	121.52	113.37	84.59	3.33	0.94	5.61	24.81	0.33	0.21	24.81	0.33	0.21
IMI_237	3.57	1.09	41.81	77.89	61.06	1.10	0.98	11.71	24.55	0.31	0.21	24.55	0.31	0.21
IMI_238	4.33	1.21	46.65	80.53	61.64	1.23	0.98	10.77	24.53	0.31	0.21	24.53	0.31	0.21
IMI_239	4.35	1.41	43.55	82.99	64.13	1.35	0.98	10.00	24.53	0.31	0.21	24.53	0.31	0.21
IMI_242	5.24	1.54	47.50	86.78	64.04	1.57	0.98	9.07	24.52	0.31	0.21	24.52	0.31	0.21
IMI_244	26.94	3.05	145.20	116.81	86.75	3.72	0.93	5.39	24.76	0.33	0.21	24.76	0.33	0.21
IMI_247	27.74	3.68	134.49	120.52	90.72	4.10	0.93	4.85	24.75	0.33	0.21	24.75	0.33	0.21
IMI_248	3.34	0.83	44.05	73.91	55.87	0.94	0.98	13.20	24.51	0.30	0.21	24.51	0.30	0.21
IMI_249	4.68	1.09	51.30	79.90	59.48	1.22	0.98	10.95	24.45	0.30	0.21	24.45	0.30	0.21
IMI_250	4.84	1.28	48.86	82.76	62.70	1.37	0.98	10.09	24.45	0.30	0.21	24.45	0.30	0.21
IMI_251	1.11	0.84	14.37	73.89	55.74	0.95	0.99	12.89	24.42	0.30	0.21	24.42	0.30	0.21
IMI_252	1.18	1.04	13.62	77.54	59.61	1.11	0.99	11.56	24.41	0.30	0.21	24.41	0.30	0.21
IMI_254	6.05	1.52	55.67	85.75	66.62	1.54	0.98	9.20	24.45	0.30	0.21	24.45	0.30	0.21
IMI_255	0.31	0.57	4.98	68.97	46.16	0.77	1.00	15.93	24.26	0.30	0.21	24.26	0.30	0.21
IMI_256	1.10	1.58	9.72	83.39	59.36	1.45	1.00	8.82	24.15	0.31	0.21	24.15	0.31	0.21
IMI_258	7.44	1.84	59.98	89.34	67.81	1.77	0.97	8.06	24.40	0.30	0.21	24.40	0.30	0.21
IMI_261	7.86	1.96	60.59	91.08	69.51	1.89	0.97	7.71	24.39	0.30	0.21	24.39	0.30	0.21
IMI_263	35.60	3.41	173.81	119.79	89.44	4.14	0.92	4.88	24.69	0.32	0.21	24.69	0.32	0.21
IMI_264	2.38	0.92	29.58	74.42	56.80	0.99	0.99	12.45	24.30	0.30	0.21	24.30	0.30	0.21
IMI_265	1.09	0.84	14.30	73.78	56.15	0.94	0.99	13.10	24.39	0.29	0.21	24.39	0.29	0.21

Aggiornamento delle mappe di pericolosità da alluvione e rischio di alluvioni comprensive di battenti e velocità necessarie per l'applicazione della LR 41/2008 ai sensi dell'articolo 4 della legge regionale n. 73 del 27/12/2018 per i Comuni di Pistoia, Agliana, Quarrata, Montale e Serravalle Pistoiese

Immissione	Area [km ²]	T ritardo [h]	Portata [m ³ /s]	Precipit. [mm]	Deflusso [mm]	Durata critica [h]	Coeff. ragguglio	Defl. unit. [m ³ /s km ²]	CPP a<1h	CPP n<1h	CPP m<1h	CPP a>1h	CPP n>1h	CPP m>1h
IMI_267	3.60	1.34	36.49	80.61	64.30	1.29	0.98	10.14	24.32	0.29	0.21	24.32	0.29	0.21
IMI_268	0.53	0.81	6.73	75.50	51.66	1.05	1.00	12.70	24.21	0.30	0.21	24.21	0.30	0.21
IMI_269	0.82	1.30	8.31	79.64	57.13	1.26	1.00	10.16	24.19	0.30	0.21	24.19	0.30	0.21
IMI_270	2.54	0.88	32.38	73.50	54.23	0.94	0.99	12.77	24.38	0.29	0.21	24.38	0.29	0.21
IMI_271	2.74	1.12	30.56	77.86	58.96	1.14	0.99	11.16	24.36	0.29	0.21	24.36	0.29	0.21
IMI_273	3.66	1.50	34.30	81.98	61.77	1.37	0.98	9.37	24.31	0.29	0.21	24.31	0.29	0.21
IMI_275	7.27	1.46	68.81	82.66	63.43	1.41	0.97	9.47	24.32	0.29	0.21	24.32	0.29	0.21
IMI_277	42.90	3.25	207.88	116.97	86.50	3.95	0.91	4.85	24.61	0.32	0.21	24.61	0.32	0.21
IMI_280	43.25	3.29	208.38	117.31	86.95	3.99	0.91	4.82	24.60	0.32	0.21	24.60	0.32	0.21
IMI_283	44.39	3.45	209.24	117.29	86.64	4.01	0.90	4.71	24.58	0.32	0.21	24.58	0.32	0.21
IMI_286	44.45	3.49	208.46	117.73	87.04	4.05	0.90	4.69	24.58	0.32	0.21	24.58	0.32	0.21
IMI_287	2.51	0.93	30.51	74.73	56.09	1.00	0.99	12.14	24.34	0.28	0.21	24.34	0.28	0.21
IMI_288	2.88	1.73	24.81	85.10	67.54	1.58	0.99	8.60	24.29	0.29	0.21	24.29	0.29	0.21
IMI_290	47.35	3.59	217.00	118.42	87.39	4.18	0.90	4.58	24.56	0.31	0.21	24.56	0.31	0.21
IMI_293	48.55	3.58	220.33	118.14	86.81	4.16	0.90	4.54	24.55	0.31	0.21	24.55	0.31	0.21
IMI_296	48.87	4.16	207.86	122.06	91.27	4.62	0.90	4.25	24.54	0.31	0.21	24.54	0.31	0.21
IMI_299	49.56	4.20	208.35	122.41	91.45	4.67	0.90	4.20	24.53	0.31	0.21	24.53	0.31	0.21
IMI_300	2.73	1.06	29.32	78.14	55.01	1.19	0.99	10.75	24.10	0.29	0.21	24.10	0.29	0.21
IMI_301	3.97	1.57	33.66	84.91	60.47	1.59	0.98	8.49	24.07	0.29	0.21	24.07	0.29	0.21
IMI_303	53.58	4.65	209.13	125.91	94.63	5.16	0.90	3.90	24.50	0.31	0.21	24.50	0.31	0.21
IMI_304	1.11	0.93	8.19	96.25	50.18	2.48	1.00	7.41	24.16	0.28	0.21	24.16	0.28	0.21
IMI_305	2.61	1.27	16.11	103.97	53.16	3.25	0.99	6.17	24.06	0.29	0.21	24.06	0.29	0.21
IMI_306	3.21	2.20	16.36	110.09	65.21	3.91	0.99	5.10	24.20	0.29	0.21	24.20	0.29	0.21
IMI_308	56.84	5.00	209.95	128.35	95.77	5.55	0.90	3.69	24.49	0.31	0.21	24.49	0.31	0.21
IMI_309	4.25	0.87	31.87	88.83	61.88	1.92	0.98	7.50	24.16	0.27	0.21	24.16	0.27	0.21
IMI_310	3.41	0.90	28.15	87.34	58.89	1.84	0.99	8.26	24.02	0.27	0.21	24.02	0.27	0.21
IMI_312	10.14	1.49	60.69	96.48	66.00	2.54	0.97	5.98	24.35	0.27	0.21	24.35	0.27	0.21
IMI_313	10.18	1.88	55.20	99.20	70.33	2.82	0.97	5.42	24.35	0.27	0.21	24.35	0.27	0.21
IMI_315	67.12	5.45	223.50	132.18	98.32	6.33	0.89	3.33	24.46	0.30	0.21	24.46	0.30	0.21

Aggiornamento delle mappe di pericolosità da alluvione e rischio di alluvioni comprensive di battenti e velocità necessarie per l'applicazione della LR 41/2008 ai sensi dell'articolo 4 della legge regionale n. 73 del 27/12/2018 per i Comuni di Pistoia, Agliana, Quarrata, Montale e Serravalle Pistoiese

Immissione	Area [km ²]	T ritardo [h]	Portata [m ³ /s]	Precipit. [mm]	Deflusso [mm]	Durata critica [h]	Coeff. ragguglio	Defl. unit. [m ³ /s km ²]	CPP a<1h	CPP n<1h	CPP m<1h	CPP a>1h	CPP n>1h	CPP m>1h
IMI_316	2.48	0.84	20.46	91.19	49.92	2.14	0.99	8.26	23.92	0.28	0.21	23.92	0.28	0.21
IMI_317	2.85	1.50	17.92	100.53	61.90	3.02	0.99	6.29	23.92	0.28	0.21	23.92	0.28	0.21
IMI_319	70.01	5.56	224.51	134.47	100.41	6.75	0.89	3.21	24.42	0.30	0.21	24.42	0.30	0.21
IMI_321	377.39	6.74	976.54	160.48	114.76	8.80	0.86	2.59	24.14	0.34	0.21	24.14	0.34	0.21
IMI_324	389.97	6.74	993.42	159.50	114.64	8.80	0.86	2.55	24.11	0.34	0.21	24.11	0.34	0.21
IMI_327	390.07	6.80	988.54	159.91	115.07	8.88	0.86	2.53	24.11	0.34	0.21	24.11	0.34	0.21
IMI_330	399.43	6.80	994.89	159.47	113.82	8.88	0.86	2.49	24.10	0.34	0.21	24.10	0.34	0.21
IMI_333	399.49	7.01	984.83	161.09	115.42	9.15	0.86	2.47	24.10	0.34	0.21	24.10	0.34	0.21
IMI_336	402.91	7.11	978.01	161.42	116.11	9.28	0.86	2.43	24.09	0.33	0.21	24.09	0.33	0.21
IMI_339	425.14	7.16	1030.27	158.42	112.66	8.95	0.86	2.42	24.09	0.33	0.20	24.09	0.33	0.20
IMI_342	438.37	7.14	1042.08	159.92	114.11	9.30	0.86	2.38	24.07	0.33	0.20	24.07	0.33	0.20
IMI_345	439.52	7.47	1026.74	162.21	116.38	9.71	0.86	2.34	24.07	0.33	0.20	24.07	0.33	0.20
IMI_348	441.67	7.46	1024.51	161.95	116.09	9.70	0.86	2.32	24.06	0.33	0.20	24.06	0.33	0.20
IMI_351	441.93	7.54	1020.94	162.52	116.67	9.80	0.86	2.31	24.06	0.33	0.20	24.06	0.33	0.20
IMI_355	442.45	7.65	1017.20	163.25	117.38	9.93	0.87	2.30	24.06	0.33	0.20	24.06	0.33	0.20
IMI_358	442.99	7.78	1008.88	161.84	116.27	9.70	0.86	2.28	24.06	0.33	0.20	24.06	0.33	0.20
IMI_361	443.00	7.81	1008.00	162.00	116.43	9.73	0.86	2.28	24.06	0.33	0.20	24.06	0.33	0.20
IMI_364	453.40	8.17	1011.01	161.56	115.78	9.75	0.86	2.23	24.05	0.33	0.20	24.05	0.33	0.20
IMI_367	475.08	9.15	1003.27	165.73	119.90	10.90	0.87	2.11	24.01	0.32	0.20	24.01	0.32	0.20
IMI_368	488.80	9.28	1001.71	166.88	121.22	11.05	0.87	2.05	24.02	0.32	0.20	24.02	0.32	0.20
IMI_369	32.30	1.81	210.71	108.47	88.50	2.63	0.91	6.52	24.70	0.37	0.21	24.70	0.37	0.21
IMI_371	33.87	1.91	213.29	110.15	89.73	2.77	0.91	6.30	24.68	0.36	0.21	24.68	0.36	0.21
IMI_374	12.85	1.69	55.34	94.54	68.58	2.62	0.96	4.31	24.22	0.25	0.21	24.22	0.25	0.21

Tabella 2-2 – Tabulati analisi idrologica al colmo immissioni Acque Alte TR 200 anni

Aggiornamento delle mappe di pericolosità da alluvione e rischio di alluvioni comprensive di battenti e velocità necessarie per l'applicazione della LR 41/2008 ai sensi dell'articolo 4 della legge regionale n. 73 del 27/12/2018 per i Comuni di Pistoia, Agliana, Quarrata, Montale e Serravalle Pistoiese

Immissione	Area [km ²]	T ritardo [h]	Portata [m ³ /s]	Precipit. [mm]	Deflusso [mm]	Durata critica [h]	Coeff. ragguglio	Defl. unit. [m ³ /s km ²]	CPP a<1h	CPP n<1h	CPP m<1h	CPP a>1h	CPP n>1h	CPP m>1h
IMI_040	0.86	1.84	3.14	82.56	59.58	4.33	1.00	3.63	24.55	0.34	0.21	24.55	0.34	0.21
IMI_043	0.72	2.03	2.33	87.43	64.37	5.24	1.00	3.23	24.66	0.33	0.21	24.66	0.33	0.21
IMI_048	0.64	1.93	2.00	92.59	68.44	6.14	1.00	3.11	24.42	0.34	0.21	24.42	0.34	0.21
IMI_053	1.13	2.09	3.19	95.20	72.20	6.81	1.00	2.82	24.56	0.33	0.21	24.56	0.33	0.21
IMI_058	1.78	2.19	5.70	85.16	64.40	4.90	1.00	3.21	24.49	0.33	0.21	24.49	0.33	0.21
IMI_061	0.44	1.89	2.08	62.47	49.49	1.93	1.00	4.74	24.68	0.32	0.21	24.68	0.32	0.21
IMI_064	0.32	1.64	1.71	62.66	49.51	1.92	1.00	5.27	24.85	0.31	0.21	24.85	0.31	0.21
IMI_067	1.81	2.63	5.12	89.70	69.95	5.90	1.00	2.82	24.66	0.32	0.21	24.66	0.32	0.21
IMI_070	0.79	2.56	2.95	69.56	56.29	2.75	1.00	3.74	24.74	0.31	0.21	24.74	0.31	0.21
IMI_075	9.25	2.64	32.20	74.34	60.72	3.36	0.97	3.48	24.38	0.33	0.21	24.38	0.33	0.21
IMI_086	0.12	1.76	0.51	70.41	60.91	2.87	1.00	4.37	24.31	0.32	0.21	24.31	0.32	0.21
IMI_089	0.76	3.46	2.34	81.59	78.67	4.52	1.00	3.07	24.35	0.32	0.21	24.35	0.32	0.21
IMI_092	9.23	4.21	26.81	85.58	80.96	4.94	0.98	2.90	24.49	0.33	0.21	24.49	0.33	0.21
IMI_095	2.01	3.69	5.82	83.20	79.74	4.86	0.99	2.89	24.43	0.32	0.21	24.43	0.32	0.21
IMI_098	0.00	1.53	0.02	72.93	60.93	3.16	1.00	4.45	24.98	0.30	0.21	24.98	0.30	0.21
IMI_101	1.02	3.41	3.09	79.78	76.39	4.33	1.00	3.04	24.51	0.31	0.21	24.51	0.31	0.21
IMI_104	0.40	3.51	1.29	74.59	71.75	3.51	1.00	3.19	24.66	0.31	0.21	24.66	0.31	0.21
IMI_107	0.02	1.52	0.10	66.92	55.75	2.47	1.00	4.57	24.76	0.30	0.21	24.76	0.30	0.21
IMI_110	4.26	4.49	12.63	80.85	77.32	4.31	0.99	2.97	24.65	0.32	0.21	24.65	0.32	0.21
IMI_113	4.30	6.82	7.39	83.94	44.45	5.15	0.99	1.72	24.90	0.30	0.21	24.90	0.30	0.21
IMI_116	0.30	1.83	0.27	158.08	17.19	45.39	1.00	0.90	24.77	0.30	0.21	24.77	0.30	0.21
IMI_119	0.95	4.10	0.38	77.20	6.32	4.06	1.00	0.40	24.93	0.29	0.21	24.93	0.29	0.21
IMI_122	2.07	4.38	1.34	100.53	13.38	9.91	1.00	0.65	24.86	0.30	0.21	24.86	0.30	0.21
IMI_156	11.58	4.52	16.63	87.25	32.59	5.24	0.97	1.44	24.54	0.33	0.21	24.54	0.33	0.21
IMI_161	0.10	1.83	0.03	162.46	150.89	56.10	1.00	0.27	24.75	0.29	0.21	24.75	0.29	0.21
IMI_164	0.06	1.24	0.02	148.82	139.85	42.73	1.00	0.28	24.89	0.28	0.21	24.89	0.28	0.21
IMI_167	14.47	4.16	28.18	92.31	68.17	6.75	0.97	1.95	23.96	0.33	0.21	23.96	0.33	0.21

Aggiornamento delle mappe di pericolosità da alluvione e rischio di alluvioni comprensive di battenti e velocità necessarie per l'applicazione della LR 41/2008 ai sensi dell'articolo 4 della legge regionale n. 73 del 27/12/2018 per i Comuni di Pistoia, Agliana, Quarrata, Montale e Serravalle Pistoiese

Immissione	Area [km ²]	T ritardo [h]	Portata [m ³ /s]	Precipit. [mm]	Deflusso [mm]	Durata critica [h]	Coeff. ragguglio	Defl. unit. [m ³ /s km ²]	CPP a<1h	CPP n<1h	CPP m<1h	CPP a>1h	CPP n>1h	CPP m>1h
IMI_170	0.45	4.25	0.57	97.74	58.15	9.80	1.00	1.27	24.86	0.28	0.21	24.86	0.28	0.21
IMI_173	0.16	2.79	0.32	92.72	41.54	8.64	1.00	2.04	24.79	0.28	0.21	24.79	0.28	0.21
IMI_176	0.07	1.45	0.20	86.69	33.39	6.69	1.00	2.77	24.42	0.29	0.21	24.42	0.29	0.21
IMI_179	27.17	4.97	41.84	84.55	59.83	5.69	0.94	1.54	24.36	0.30	0.21	24.36	0.30	0.21
IMI_184	1.79	3.71	1.07	109.74	100.55	13.77	1.00	0.60	24.13	0.30	0.21	24.13	0.30	0.21
IMI_187	0.50	2.88	0.56	100.77	75.17	10.67	1.00	1.11	24.20	0.30	0.21	24.20	0.30	0.21
IMI_190	0.01	1.60	0.02	94.34	46.25	8.78	1.00	2.38	24.13	0.30	0.21	24.13	0.30	0.21
IMI_193	4.85	5.84	3.81	111.53	93.38	14.09	0.99	0.79	24.73	0.30	0.21	24.73	0.30	0.21
IMI_196	0.07	1.34	0.18	91.32	42.40	7.84	1.00	2.57	24.13	0.30	0.21	24.13	0.30	0.21
IMI_199	0.34	2.64	0.65	100.60	55.96	10.93	1.00	1.90	24.11	0.30	0.21	24.11	0.30	0.21
IMI_202	2.03	4.61	2.39	99.11	69.10	10.34	1.00	1.18	24.47	0.29	0.21	24.47	0.29	0.21
IMI_205	0.26	2.93	0.47	99.74	56.24	11.09	1.00	1.81	23.81	0.30	0.21	23.81	0.30	0.21
IMI_208	0.15	2.47	0.37	85.38	42.28	6.57	1.00	2.49	23.83	0.30	0.21	23.83	0.30	0.21
IMI_210	26.97	6.50	16.56	121.87	102.53	18.43	0.96	0.61	24.43	0.30	0.21	24.43	0.30	0.21
IMI_214	0.12	1.69	0.30	86.64	34.41	7.36	1.00	2.49	23.87	0.29	0.21	23.87	0.29	0.21
IMI_228	1.17	1.73	4.71	74.27	41.52	3.28	1.00	4.01	24.39	0.33	0.21	24.39	0.33	0.21
IMI_231	0.67	0.88	5.26	51.75	34.55	1.07	1.00	7.80	24.62	0.32	0.21	24.62	0.32	0.21
IMI_234	5.67	3.27	15.37	96.24	51.77	6.91	0.99	2.71	24.59	0.33	0.21	24.59	0.33	0.21
IMI_240	0.88	2.00	3.08	79.91	42.17	4.29	1.00	3.50	24.50	0.32	0.21	24.50	0.32	0.21
IMI_245	0.72	2.45	1.92	91.23	46.94	6.80	1.00	2.68	24.36	0.31	0.21	24.36	0.31	0.21
IMI_259	0.41	3.00	1.26	79.77	51.60	4.63	1.00	3.10	24.09	0.31	0.21	24.09	0.31	0.21
IMI_278	0.34	1.66	1.32	73.09	37.73	3.53	1.00	3.83	24.11	0.31	0.21	24.11	0.31	0.21
IMI_281	1.12	1.58	5.14	65.28	35.59	2.49	1.00	4.58	24.07	0.30	0.21	24.07	0.30	0.21
IMI_284	0.05	1.10	0.22	75.46	30.11	3.90	1.00	4.15	24.05	0.31	0.21	24.05	0.31	0.21
IMI_291	1.19	1.83	5.49	63.72	39.12	2.33	1.00	4.61	23.99	0.30	0.21	23.99	0.30	0.21
IMI_294	0.26	0.99	1.65	57.41	33.18	1.64	1.00	6.32	24.02	0.30	0.21	24.02	0.30	0.21
IMI_297	0.69	1.83	3.28	62.20	38.36	2.13	1.00	4.79	24.04	0.30	0.21	24.04	0.30	0.21
IMI_322	12.56	1.83	25.47	78.65	62.05	5.83	0.97	2.03	24.12	0.26	0.21	24.12	0.26	0.21
IMI_325	0.09	1.54	0.52	56.05	38.34	1.65	1.00	5.48	23.68	0.28	0.21	23.68	0.28	0.21

Aggiornamento delle mappe di pericolosità da alluvione e rischio di alluvioni comprensive di battenti e velocità necessarie per l'applicazione della LR 41/2008 ai sensi dell'articolo 4 della legge regionale n. 73 del 27/12/2018 per i Comuni di Pistoia, Agliana, Quarrata, Montale e Serravalle Pistoiese

Immissione	Area [km ²]	T ritardo [h]	Portata [m ³ /s]	Precipit. [mm]	Deflusso [mm]	Durata critica [h]	Coeff. ragguglio	Defl. unit. [m ³ /s km ²]	CPP a<1h	CPP n<1h	CPP m<1h	CPP a>1h	CPP n>1h	CPP m>1h
IMI_328	9.35	3.78	15.11	100.45	63.32	11.81	0.98	1.62	24.04	0.29	0.21	24.04	0.29	0.21
IMI_331	0.03	1.30	0.07	83.83	31.44	6.98	1.00	2.65	23.68	0.28	0.21	23.68	0.28	0.21
IMI_334	3.40	1.17	7.26	76.65	60.26	5.25	0.99	2.14	23.99	0.27	0.21	23.99	0.27	0.21
IMI_337	22.21	5.66	38.48	92.27	60.78	8.76	0.96	1.73	24.44	0.28	0.21	24.44	0.28	0.21
IMI_340	13.23	4.75	23.00	90.82	58.40	9.35	0.97	1.74	23.98	0.27	0.21	23.98	0.27	0.21
IMI_343	1.10	2.17	3.47	59.69	34.43	2.09	1.00	3.14	23.80	0.27	0.21	23.80	0.27	0.21
IMI_346	2.14	1.05	4.94	75.44	49.12	5.10	0.99	2.31	23.98	0.26	0.21	23.98	0.26	0.21
IMI_349	0.24	0.88	0.52	53.90	21.24	1.45	1.00	2.18	23.73	0.26	0.21	23.73	0.26	0.21
IMI_352	0.43	0.98	1.08	75.16	28.67	5.13	1.00	2.52	23.75	0.26	0.21	23.75	0.26	0.21
IMI_353	0.08	1.08	0.43	51.27	26.42	1.21	1.00	5.37	23.71	0.26	0.21	23.71	0.26	0.21
IMI_356	0.52	0.86	1.67	49.36	16.01	1.03	1.00	3.23	23.84	0.26	0.21	23.84	0.26	0.21
IMI_359	0.02	1.34	0.04	81.87	34.86	7.26	1.00	2.49	23.83	0.26	0.21	23.83	0.26	0.21
IMI_362	10.30	5.83	13.33	97.86	61.22	13.14	0.98	1.29	23.63	0.27	0.21	23.63	0.27	0.21
IMI_365	19.37	5.06	14.39	91.62	35.58	11.95	0.96	0.74	23.41	0.26	0.21	23.41	0.26	0.21
IMI_372	0.62	1.36	2.53	75.48	55.28	3.31	1.00	4.10	24.38	0.34	0.21	24.38	0.34	0.21

Tabella 2-3 – Tabulati analisi idrologica al colmo immissioni acque basse modello Acque Alte TR 30 anni

Aggiornamento delle mappe di pericolosità da alluvione e rischio di alluvioni comprensive di battenti e velocità necessarie per l'applicazione della LR 41/2008 ai sensi dell'articolo 4 della legge regionale n. 73 del 27/12/2018 per i Comuni di Pistoia, Agliana, Quarrata, Montale e Serravalle Pistoiese

Immissione	Area [km ²]	T ritardo [h]	Portata [m ³ /s]	Precipit. [mm]	Deflusso [mm]	Durata critica [h]	Coeff. ragguglio	Defl. unit. [m ³ /s km ²]	CPP a<1h	CPP n<1h	CPP m<1h	CPP a>1h	CPP n>1h	CPP m>1h
IMI_040	0.86	1.84	5.79	108.43	83.25	2.95	1.00	6.71	24.55	0.34	0.21	24.55	0.34	0.21
IMI_043	0.72	2.03	4.41	112.56	86.03	3.31	1.00	6.12	24.66	0.33	0.21	24.66	0.33	0.21
IMI_048	0.64	1.93	3.84	116.80	88.71	3.71	1.00	5.97	24.42	0.34	0.21	24.42	0.34	0.21
IMI_053	1.13	2.09	6.31	120.63	91.58	4.12	1.00	5.56	24.56	0.33	0.21	24.56	0.33	0.21
IMI_058	1.78	2.19	10.87	111.04	89.50	3.23	0.99	6.12	24.49	0.33	0.21	24.49	0.33	0.21
IMI_061	0.44	1.89	3.40	93.02	79.88	1.90	1.00	7.74	24.68	0.32	0.21	24.68	0.32	0.21
IMI_064	0.32	1.64	2.79	91.91	78.78	1.82	1.00	8.58	24.85	0.31	0.21	24.85	0.31	0.21
IMI_067	1.81	2.63	9.77	115.43	95.52	3.70	0.99	5.39	24.66	0.32	0.21	24.66	0.32	0.21
IMI_070	0.79	2.56	4.93	101.94	88.40	2.57	1.00	6.23	24.74	0.31	0.21	24.74	0.31	0.21
IMI_075	9.25	2.64	57.46	103.28	88.79	2.68	0.97	6.22	24.38	0.33	0.21	24.38	0.33	0.21
IMI_086	0.12	1.76	0.88	96.53	86.50	2.19	1.00	7.59	24.31	0.32	0.21	24.31	0.32	0.21
IMI_089	0.76	3.46	3.90	114.09	111.24	3.68	1.00	5.13	24.35	0.32	0.21	24.35	0.32	0.21
IMI_092	9.23	4.21	43.62	121.62	116.05	4.24	0.97	4.73	24.49	0.33	0.21	24.49	0.33	0.21
IMI_095	2.01	3.69	9.85	116.26	112.77	3.93	0.99	4.89	24.43	0.32	0.21	24.43	0.32	0.21
IMI_098	0.00	1.53	0.03	101.87	89.47	2.53	1.00	7.71	24.98	0.30	0.21	24.98	0.30	0.21
IMI_101	1.02	3.41	5.27	111.43	107.95	3.47	1.00	5.18	24.51	0.31	0.21	24.51	0.31	0.21
IMI_104	0.40	3.51	2.23	102.41	99.87	2.67	1.00	5.51	24.66	0.31	0.21	24.66	0.31	0.21
IMI_107	0.02	1.52	0.17	91.05	79.48	1.80	1.00	8.06	24.76	0.30	0.21	24.76	0.30	0.21
IMI_110	4.26	4.49	20.30	116.32	112.17	3.83	0.99	4.77	24.65	0.32	0.21	24.65	0.32	0.21
IMI_113	4.30	6.82	12.03	118.62	70.47	4.26	0.99	2.80	24.90	0.30	0.21	24.90	0.30	0.21
IMI_116	0.30	1.83	0.76	174.80	34.17	16.50	1.00	2.50	24.77	0.30	0.21	24.77	0.30	0.21
IMI_119	0.95	4.10	1.87	180.79	52.37	18.79	1.00	1.97	24.93	0.29	0.21	24.93	0.29	0.21
IMI_122	2.07	4.38	4.17	184.00	68.58	19.57	1.00	2.01	24.86	0.30	0.21	24.86	0.30	0.21
IMI_156	11.58	4.52	26.34	125.11	50.87	4.61	0.97	2.27	24.54	0.33	0.21	24.54	0.33	0.21
IMI_161	0.10	1.83	0.21	172.52	98.89	17.04	1.00	2.23	24.75	0.29	0.21	24.75	0.29	0.21
IMI_164	0.06	1.24	0.15	164.95	88.40	15.01	1.00	2.49	24.89	0.28	0.21	24.89	0.28	0.21
IMI_167	14.47	4.16	50.52	125.25	93.71	5.04	0.96	3.49	23.96	0.33	0.21	23.96	0.33	0.21

Aggiornamento delle mappe di pericolosità da alluvione e rischio di alluvioni comprensive di battenti e velocità necessarie per l'applicazione della LR 41/2008 ai sensi dell'articolo 4 della legge regionale n. 73 del 27/12/2018 per i Comuni di Pistoia, Agliana, Quarrata, Montale e Serravalle Pistoiese

Immissione	Area [km ²]	T ritardo [h]	Portata [m ³ /s]	Precipit. [mm]	Deflusso [mm]	Durata critica [h]	Coeff. ragguglio	Defl. unit. [m ³ /s km ²]	CPP a<1h	CPP n<1h	CPP m<1h	CPP a>1h	CPP n>1h	CPP m>1h
IMI_170	0.45	4.25	1.11	124.64	67.25	5.58	1.00	2.45	24.86	0.28	0.21	24.86	0.28	0.21
IMI_173	0.16	2.79	0.66	117.07	63.12	4.69	1.00	4.15	24.79	0.28	0.21	24.79	0.28	0.21
IMI_176	0.07	1.45	0.42	110.05	54.32	3.79	1.00	5.79	24.42	0.29	0.21	24.42	0.29	0.21
IMI_179	27.17	4.97	73.25	119.27	81.41	4.69	0.94	2.70	24.36	0.30	0.21	24.36	0.30	0.21
IMI_184	1.79	3.71	3.53	182.32	111.25	19.38	1.00	1.97	24.13	0.30	0.21	24.13	0.30	0.21
IMI_187	0.50	2.88	1.11	124.78	65.25	5.65	1.00	2.21	24.20	0.30	0.21	24.20	0.30	0.21
IMI_190	0.01	1.60	0.04	115.40	59.59	4.45	1.00	5.15	24.13	0.30	0.21	24.13	0.30	0.21
IMI_193	4.85	5.84	8.70	185.13	124.16	19.99	0.99	1.79	24.73	0.30	0.21	24.73	0.30	0.21
IMI_196	0.07	1.34	0.40	111.23	54.34	3.93	1.00	5.73	24.13	0.30	0.21	24.13	0.30	0.21
IMI_199	0.34	2.64	1.35	126.91	75.32	6.14	1.00	3.94	24.11	0.30	0.21	24.11	0.30	0.21
IMI_202	2.03	4.61	4.63	128.37	74.12	6.29	0.99	2.28	24.47	0.29	0.21	24.47	0.29	0.21
IMI_205	0.26	2.93	0.99	124.22	74.24	5.98	1.00	3.77	23.81	0.30	0.21	23.81	0.30	0.21
IMI_208	0.15	2.47	0.72	109.90	65.99	3.94	1.00	4.89	23.83	0.30	0.21	23.83	0.30	0.21
IMI_210	26.97	6.50	43.16	198.76	132.66	24.50	0.97	1.60	24.43	0.30	0.21	24.43	0.30	0.21
IMI_214	0.12	1.69	0.63	109.84	54.93	4.08	1.00	5.21	23.87	0.29	0.21	23.87	0.29	0.21
IMI_228	1.17	1.73	8.66	98.43	65.60	2.28	1.00	7.39	24.39	0.33	0.21	24.39	0.33	0.21
IMI_231	0.67	0.88	9.00	74.28	56.52	0.94	1.00	13.35	24.62	0.32	0.21	24.62	0.32	0.21
IMI_234	5.67	3.27	27.58	126.84	81.48	4.73	0.98	4.87	24.59	0.33	0.21	24.59	0.33	0.21
IMI_240	0.88	2.00	5.71	104.04	65.77	2.76	1.00	6.49	24.50	0.32	0.21	24.50	0.32	0.21
IMI_245	0.72	2.45	3.60	118.90	74.60	4.40	1.00	5.02	24.36	0.31	0.21	24.36	0.31	0.21
IMI_259	0.41	3.00	2.14	109.51	81.06	3.51	1.00	5.29	24.09	0.31	0.21	24.09	0.31	0.21
IMI_278	0.34	1.66	2.43	97.75	62.34	2.46	1.00	7.05	24.11	0.31	0.21	24.11	0.31	0.21
IMI_281	1.12	1.58	9.13	88.33	58.40	1.80	1.00	8.13	24.07	0.30	0.21	24.07	0.30	0.21
IMI_284	0.05	1.10	0.43	97.99	52.75	2.49	1.00	7.89	24.05	0.31	0.21	24.05	0.31	0.21
IMI_291	1.19	1.83	9.37	87.65	62.51	1.77	1.00	7.87	23.99	0.30	0.21	23.99	0.30	0.21
IMI_294	0.26	0.99	2.82	78.68	54.24	1.22	1.00	10.82	24.02	0.30	0.21	24.02	0.30	0.21
IMI_297	0.69	1.83	5.57	86.43	62.05	1.67	1.00	8.12	24.04	0.30	0.21	24.04	0.30	0.21
IMI_322	12.56	1.83	50.50	98.51	71.76	2.97	0.96	4.02	24.12	0.26	0.21	24.12	0.26	0.21
IMI_325	0.09	1.54	0.86	78.70	60.95	1.32	1.00	9.03	23.68	0.28	0.21	23.68	0.28	0.21

Aggiornamento delle mappe di pericolosità da alluvione e rischio di alluvioni comprensive di battenti e velocità necessarie per l'applicazione della LR 41/2008 ai sensi dell'articolo 4 della legge regionale n. 73 del 27/12/2018 per i Comuni di Pistoia, Agliana, Quarrata, Montale e Serravalle Pistoiese

Immissione	Area [km ²]	T ritardo [h]	Portata [m ³ /s]	Precipit. [mm]	Deflusso [mm]	Durata critica [h]	Coeff. ragguaglio	Defl. unit. [m ³ /s km ²]	CPP a<1h	CPP n<1h	CPP m<1h	CPP a>1h	CPP n>1h	CPP m>1h
IMI_328	9.35	3.78	29.92	129.86	89.13	7.09	0.98	3.20	24.04	0.29	0.21	24.04	0.29	0.21
IMI_331	0.03	1.30	0.16	104.67	49.72	3.66	1.00	5.73	23.68	0.28	0.21	23.68	0.28	0.21
IMI_334	3.40	1.17	15.25	93.45	60.24	2.43	0.99	4.49	23.99	0.27	0.21	23.99	0.27	0.21
IMI_337	22.21	5.66	68.48	126.04	91.29	6.33	0.95	3.08	24.44	0.28	0.21	24.44	0.28	0.21
IMI_340	13.23	4.75	44.12	120.79	86.98	6.07	0.97	3.34	23.98	0.27	0.21	23.98	0.27	0.21
IMI_343	1.10	2.17	6.00	90.93	61.39	2.23	1.00	5.43	23.80	0.27	0.21	23.80	0.27	0.21
IMI_346	2.14	1.05	11.53	94.70	51.33	2.60	0.99	5.38	23.98	0.26	0.21	23.98	0.26	0.21
IMI_349	0.24	0.88	0.86	75.04	23.76	1.11	1.00	3.61	23.73	0.26	0.21	23.73	0.26	0.21
IMI_352	0.43	0.98	2.80	97.48	46.23	2.99	1.00	6.51	23.75	0.26	0.21	23.75	0.26	0.21
IMI_353	0.08	1.08	0.73	73.09	44.04	1.01	1.00	8.96	23.71	0.26	0.21	23.71	0.26	0.21
IMI_356	0.52	0.86	3.99	89.07	45.97	2.12	1.00	7.70	23.84	0.26	0.21	23.84	0.26	0.21
IMI_359	0.02	1.34	0.09	103.27	53.14	3.75	1.00	5.55	23.83	0.26	0.21	23.83	0.26	0.21
IMI_362	10.30	5.83	26.32	132.44	94.04	9.11	0.98	2.56	23.63	0.27	0.21	23.63	0.27	0.21
IMI_365	19.37	5.06	41.54	135.12	72.80	11.34	0.96	2.14	23.41	0.26	0.21	23.41	0.26	0.21
IMI_372	0.62	1.36	4.95	99.80	77.27	2.31	1.00	8.00	24.38	0.34	0.21	24.38	0.34	0.21

Tabella 2-4 – Tabulati analisi idrologica al colmo immissioni acque basse modello Acque Alte TR 200 anni

Aggiornamento delle mappe di pericolosità da alluvione e rischio di alluvioni comprensive di battenti e velocità necessarie per l'applicazione della LR 41/2008 ai sensi dell'articolo 4 della legge regionale n. 73 del 27/12/2018 per i Comuni di Pistoia, Agliana, Quarrata, Montale e Serravalle Pistoiese

3 TABULATI ANALISI IDROLOGICA MODELLO PIENE PER MODELLO IDRAULICO ACQUE BASSE

Si riportano nelle seguenti tabelle i risultati della modellazione idrologica con il software PIENE per i bacini idrografici totali al colmo per il modello idraulico Acque Basse.

Aggiornamento delle mappe di pericolosità da alluvione e rischio di alluvioni comprensive di battenti e velocità necessarie per l'applicazione della LR 41/2008 ai sensi dell'articolo 4 della legge regionale n. 73 del 27/12/2018 per i Comuni di Pistoia, Agliana, Quarrata, Montale e Serravalle Pistoiese

Immissione	Area [km ²]	T ritardo [h]	Portata [m ³ /s]	Precipit. [mm]	Deflusso [mm]	Durata critica [h]	Coeff. ragguglio	Defl. unit. [m ³ /s km ²]	CPP a<1h	CPP n<1h	CPP m<1h	CPP a>1h	CPP n>1h	CPP m>1h
IMI_001	1.13	2.69	4.21	76.19	72.61	3.52	1.00	3.74	24.59	0.33	0.21	24.59	0.33	0.21
IMI_002	3.61	3.97	11.70	79.23	75.77	4.01	0.99	3.24	24.59	0.32	0.21	24.59	0.32	0.21
IMI_003	4.11	4.49	12.37	80.85	77.40	4.30	0.99	3.01	24.63	0.32	0.21	24.63	0.32	0.21
IMI_004	3.77	6.94	7.73	80.35	47.52	4.43	0.99	2.05	24.91	0.30	0.21	24.91	0.30	0.21
IMI_005	4.30	6.82	7.39	83.94	44.45	5.15	0.99	1.72	24.90	0.30	0.21	24.90	0.30	0.21
IMI_006	0.36	2.43	1.40	74.77	70.76	3.33	1.00	3.89	24.36	0.33	0.21	24.36	0.33	0.21
IMI_007	1.04	3.37	3.33	81.96	79.22	4.37	1.00	3.21	24.52	0.33	0.21	24.52	0.33	0.21
IMI_008	0.19	2.20	0.93	60.93	57.01	1.77	1.00	4.94	24.49	0.33	0.21	24.49	0.33	0.21
IMI_009	0.44	2.16	2.04	67.40	62.81	2.42	1.00	4.63	24.42	0.33	0.21	24.42	0.33	0.21
IMI_010	1.04	2.41	4.33	70.35	66.21	2.73	1.00	4.15	24.47	0.33	0.21	24.47	0.33	0.21
IMI_011	3.55	2.95	13.27	75.27	71.64	3.34	0.99	3.74	24.45	0.33	0.21	24.45	0.33	0.21
IMI_012	3.74	3.07	13.62	77.37	73.85	3.63	0.99	3.64	24.45	0.33	0.21	24.45	0.33	0.21
IMI_013	0.16	1.72	0.74	71.37	64.17	2.86	1.00	4.63	24.77	0.32	0.21	24.77	0.32	0.21
IMI_014	1.28	2.31	5.33	74.14	69.53	3.11	1.00	4.17	24.45	0.34	0.21	24.45	0.34	0.21
IMI_015	1.87	3.00	6.99	77.01	73.56	3.52	0.99	3.75	24.47	0.34	0.21	24.47	0.34	0.21
IMI_016	2.88	3.60	9.67	78.87	75.44	3.84	0.99	3.35	24.49	0.33	0.21	24.49	0.33	0.21
IMI_017	3.65	3.93	11.31	82.35	78.88	4.40	0.99	3.10	24.49	0.33	0.21	24.49	0.33	0.21
IMI_019	7.48	3.64	24.29	80.55	76.26	4.10	0.98	3.25	24.47	0.33	0.21	24.47	0.33	0.21
IMI_021	7.66	3.64	24.82	81.70	77.45	4.29	0.98	3.24	24.48	0.33	0.21	24.48	0.33	0.21
IMI_023	9.23	4.21	26.81	85.58	80.96	4.94	0.98	2.90	24.49	0.33	0.21	24.49	0.33	0.21
IMI_024	1.42	2.91	4.57	80.35	75.34	4.36	1.00	3.22	24.43	0.32	0.21	24.43	0.32	0.21
IMI_025	2.01	3.69	5.82	83.20	79.74	4.86	0.99	2.89	24.43	0.32	0.21	24.43	0.32	0.21
IMI_026	0.15	1.81	0.16	162.12	19.91	37.84	1.00	1.10	24.25	0.32	0.21	24.25	0.32	0.21
IMI_027	1.01	3.10	1.18	71.48	17.19	2.97	1.00	1.17	24.42	0.32	0.21	24.42	0.32	0.21
IMI_028	0.17	4.37	0.51	89.63	70.73	5.30	1.00	3.00	24.75	0.34	0.21	24.75	0.34	0.21
IMI_029	2.07	2.82	4.79	77.53	34.82	3.37	0.99	2.31	24.82	0.34	0.21	24.82	0.34	0.21
IMI_030	2.92	3.26	5.13	82.36	31.63	4.11	0.99	1.76	24.76	0.34	0.21	24.76	0.34	0.21

Aggiornamento delle mappe di pericolosità da alluvione e rischio di alluvioni comprensive di battenti e velocità necessarie per l'applicazione della LR 41/2008 ai sensi dell'articolo 4 della legge regionale n. 73 del 27/12/2018 per i Comuni di Pistoia, Agliana, Quarrata, Montale e Serravalle Pistoiese

Immissione	Area [km ²]	T ritardo [h]	Portata [m ³ /s]	Precipit. [mm]	Deflusso [mm]	Durata critica [h]	Coeff. ragguglio	Defl. unit. [m ³ /s km ²]	CPP a<1h	CPP n<1h	CPP m<1h	CPP a>1h	CPP n>1h	CPP m>1h
IMI_031	4.71	3.23	8.10	79.82	29.02	3.85	0.99	1.72	24.65	0.34	0.21	24.65	0.34	0.21
IMI_032	8.42	3.72	17.26	82.10	37.77	4.27	0.98	2.05	24.61	0.33	0.21	24.61	0.33	0.21
IMI_033	10.03	4.08	16.95	83.23	32.41	4.50	0.97	1.69	24.57	0.33	0.21	24.57	0.33	0.21
IMI_035	11.58	4.52	16.63	87.25	32.59	5.24	0.97	1.44	24.54	0.33	0.21	24.54	0.33	0.21
IMI_036	2.23	4.44	1.06	116.34	108.81	15.50	1.00	0.48	24.68	0.30	0.21	24.68	0.30	0.21
IMI_037	3.97	5.05	3.22	109.05	90.61	12.91	0.99	0.81	24.79	0.30	0.21	24.79	0.30	0.21
IMI_038	4.85	5.84	3.81	111.53	93.38	14.09	0.99	0.79	24.73	0.30	0.21	24.73	0.30	0.21
IMI_039	0.00	0.80	0.00	190.49	156.75	66.25	1.00	0.30	24.51	0.32	0.21	24.51	0.32	0.21
IMI_040	0.16	1.83	0.05	190.66	160.50	67.72	1.00	0.29	24.40	0.32	0.21	24.40	0.32	0.21
IMI_041	1.64	3.23	0.50	173.58	151.26	51.66	1.00	0.30	24.47	0.31	0.21	24.47	0.31	0.21
IMI_042	2.98	3.88	0.90	169.82	150.33	49.24	1.00	0.30	24.42	0.31	0.21	24.42	0.31	0.21
IMI_043	3.24	4.21	0.98	173.64	153.50	52.95	1.00	0.30	24.43	0.31	0.21	24.43	0.31	0.21
IMI_044	5.19	4.47	1.54	174.68	154.65	55.47	1.00	0.30	24.47	0.31	0.21	24.47	0.31	0.21
IMI_045	5.80	4.88	1.86	142.29	131.37	29.08	0.99	0.32	24.49	0.31	0.21	24.49	0.31	0.21
IMI_046	0.80	3.12	0.35	80.36	80.53	4.48	1.00	0.44	24.44	0.31	0.21	24.44	0.31	0.21
IMI_047	0.46	3.28	0.13	193.68	164.76	70.33	1.00	0.29	24.54	0.32	0.21	24.54	0.32	0.21
IMI_048	2.74	4.11	1.44	89.99	85.16	6.23	0.99	0.53	24.46	0.32	0.21	24.46	0.32	0.21
IMI_050	4.15	4.12	2.81	98.60	88.05	8.46	0.99	0.68	24.43	0.32	0.21	24.43	0.32	0.21
IMI_051	0.05	1.32	0.05	60.17	61.26	1.82	1.00	1.11	24.24	0.31	0.21	24.24	0.31	0.21
IMI_052	0.43	1.65	0.29	93.74	85.60	7.57	1.00	0.67	24.21	0.31	0.21	24.21	0.31	0.21
IMI_054	6.02	4.30	5.25	107.70	87.25	11.42	0.99	0.87	24.38	0.31	0.21	24.38	0.31	0.21
IMI_055	7.01	4.62	6.40	108.25	86.41	11.76	0.99	0.91	24.35	0.31	0.21	24.35	0.31	0.21
IMI_056	10.02	5.13	7.21	113.95	96.40	14.17	0.98	0.72	24.34	0.31	0.21	24.34	0.31	0.21
IMI_057	10.08	5.72	6.97	115.24	98.60	14.69	0.98	0.69	24.34	0.31	0.21	24.34	0.31	0.21
IMI_058	0.28	3.44	0.08	172.29	157.95	61.79	1.00	0.27	24.33	0.30	0.21	24.33	0.30	0.21
IMI_060	10.39	5.76	6.99	115.80	99.62	14.98	0.98	0.67	24.33	0.31	0.21	24.33	0.31	0.21
IMI_061	0.15	2.84	0.33	74.58	45.24	3.83	1.00	2.27	24.21	0.30	0.21	24.21	0.30	0.21
IMI_063	10.54	5.73	7.20	115.36	98.78	14.78	0.98	0.68	24.33	0.31	0.21	24.33	0.31	0.21
IMI_064	0.96	2.93	0.68	102.40	93.47	10.92	1.00	0.71	24.12	0.30	0.21	24.12	0.30	0.21

Aggiornamento delle mappe di pericolosità da alluvione e rischio di alluvioni comprensive di battenti e velocità necessarie per l'applicazione della LR 41/2008 ai sensi dell'articolo 4 della legge regionale n. 73 del 27/12/2018 per i Comuni di Pistoia, Agliana, Quarrata, Montale e Serravalle Pistoiese

Immissione	Area [km ²]	T ritardo [h]	Portata [m ³ /s]	Precipit. [mm]	Deflusso [mm]	Durata critica [h]	Coeff. ragguaglio	Defl. unit. [m ³ /s km ²]	CPP a<1h	CPP n<1h	CPP m<1h	CPP a>1h	CPP n>1h	CPP m>1h
IMI_065	1.79	3.71	1.07	109.74	100.55	13.77	1.00	0.60	24.13	0.30	0.21	24.13	0.30	0.21
IMI_066	0.29	0.84	1.97	60.19	35.71	1.63	1.00	6.89	24.78	0.34	0.21	24.78	0.34	0.21
IMI_067	1.93	1.97	7.01	83.35	43.01	4.35	0.99	3.64	24.61	0.34	0.21	24.61	0.34	0.21
IMI_068	0.17	0.67	1.39	54.52	32.43	1.23	1.00	8.22	24.65	0.34	0.21	24.65	0.34	0.21
IMI_069	0.93	1.87	3.94	75.86	43.70	3.29	1.00	4.23	24.58	0.34	0.21	24.58	0.34	0.21
IMI_071	4.00	2.34	13.14	87.55	45.77	5.08	0.99	3.28	24.62	0.34	0.21	24.62	0.34	0.21
IMI_072	4.97	2.75	14.81	92.87	48.90	6.13	0.99	2.98	24.60	0.33	0.21	24.60	0.33	0.21
IMI_073	0.18	2.71	0.47	96.85	45.43	7.59	1.00	2.62	24.52	0.32	0.21	24.52	0.32	0.21
IMI_075	5.67	3.27	15.37	96.24	51.77	6.91	0.99	2.71	24.59	0.33	0.21	24.59	0.33	0.21
IMI_076	0.08	2.40	0.17	99.26	54.26	10.24	1.00	2.05	23.96	0.30	0.21	23.96	0.30	0.21
IMI_077	1.32	2.48	3.05	90.81	51.52	7.65	1.00	2.30	23.93	0.30	0.21	23.93	0.30	0.21
IMI_078	2.73	3.18	5.56	94.80	56.35	8.82	0.99	2.04	24.15	0.30	0.21	24.15	0.30	0.21
IMI_079	4.53	2.96	8.94	96.07	55.02	9.43	0.99	1.97	24.29	0.29	0.21	24.29	0.29	0.21
IMI_080	6.07	3.24	11.44	97.74	56.75	10.15	0.99	1.88	24.18	0.29	0.21	24.18	0.29	0.21

Tabella 3-1 – Tabulati analisi idrologica al colmo immissioni Acque Basse TR 30 anni

Aggiornamento delle mappe di pericolosità da alluvione e rischio di alluvioni comprensive di battenti e velocità necessarie per l'applicazione della LR 41/2008 ai sensi dell'articolo 4 della legge regionale n. 73 del 27/12/2018 per i Comuni di Pistoia, Agliana, Quarrata, Montale e Serravalle Pistoiese

Immissione	Area [km ²]	T ritardo [h]	Portata [m ³ /s]	Precipit. [mm]	Deflusso [mm]	Durata critica [h]	Coeff. ragguglio	Defl. unit. [m ³ /s km ²]	CPP a<1h	CPP n<1h	CPP m<1h	CPP a>1h	CPP n>1h	CPP m>1h
IMI_001	1.13	2.69	7.02	106.59	102.97	2.86	1.00	6.23	24.59	0.33	0.21	24.59	0.33	0.21
IMI_002	3.61	3.97	18.86	112.11	108.31	3.38	0.99	5.22	24.59	0.32	0.21	24.59	0.32	0.21
IMI_003	4.11	4.49	19.89	116.33	112.28	3.83	0.99	4.84	24.63	0.32	0.21	24.63	0.32	0.21
IMI_004	3.77	6.94	12.64	115.43	77.61	3.88	0.99	3.35	24.91	0.30	0.21	24.91	0.30	0.21
IMI_005	4.30	6.82	12.03	118.62	70.47	4.26	0.99	2.80	24.90	0.30	0.21	24.90	0.30	0.21
IMI_006	0.36	2.43	2.34	102.84	98.86	2.59	1.00	6.50	24.36	0.33	0.21	24.36	0.33	0.21
IMI_007	1.04	3.37	5.50	114.70	112.17	3.57	1.00	5.30	24.52	0.33	0.21	24.52	0.33	0.21
IMI_008	0.19	2.20	1.43	92.91	88.83	1.87	1.00	7.61	24.49	0.33	0.21	24.49	0.33	0.21
IMI_009	0.44	2.16	3.29	95.58	91.07	2.06	1.00	7.46	24.42	0.33	0.21	24.42	0.33	0.21
IMI_010	1.04	2.41	7.09	99.48	95.35	2.31	1.00	6.78	24.47	0.33	0.21	24.47	0.33	0.21
IMI_011	3.55	2.95	21.77	106.60	102.56	2.82	0.99	6.14	24.45	0.33	0.21	24.45	0.33	0.21
IMI_012	3.74	3.07	22.32	109.78	105.81	3.09	0.99	5.97	24.45	0.33	0.21	24.45	0.33	0.21
IMI_013	0.16	1.72	1.24	99.40	91.99	2.29	1.00	7.79	24.77	0.32	0.21	24.77	0.32	0.21
IMI_014	1.28	2.31	8.76	103.94	99.21	2.57	1.00	6.87	24.45	0.34	0.21	24.45	0.34	0.21
IMI_015	1.87	3.00	11.40	109.37	105.74	3.02	0.99	6.11	24.47	0.34	0.21	24.47	0.34	0.21
IMI_016	2.88	3.60	15.62	111.65	107.92	3.26	0.99	5.42	24.49	0.33	0.21	24.49	0.33	0.21
IMI_017	3.65	3.93	18.35	118.78	114.96	3.95	0.99	5.03	24.49	0.33	0.21	24.49	0.33	0.21
IMI_019	7.48	3.64	39.63	114.04	109.06	3.48	0.98	5.30	24.47	0.33	0.21	24.47	0.33	0.21
IMI_021	7.66	3.64	40.50	114.03	109.05	3.48	0.98	5.29	24.48	0.33	0.21	24.48	0.33	0.21
IMI_023	9.23	4.21	43.62	121.62	116.05	4.24	0.97	4.73	24.49	0.33	0.21	24.49	0.33	0.21
IMI_024	1.42	2.91	7.76	111.19	106.03	3.41	1.00	5.48	24.43	0.32	0.21	24.43	0.32	0.21
IMI_025	2.01	3.69	9.85	116.26	112.77	3.93	0.99	4.89	24.43	0.32	0.21	24.43	0.32	0.21
IMI_026	0.15	1.81	0.42	179.45	37.42	15.02	1.00	2.80	24.25	0.32	0.21	24.25	0.32	0.21
IMI_027	1.01	3.10	1.89	101.49	26.98	2.54	1.00	1.88	24.42	0.32	0.21	24.42	0.32	0.21
IMI_028	0.17	4.37	0.80	127.84	108.80	4.60	1.00	4.74	24.75	0.34	0.21	24.75	0.34	0.21
IMI_029	2.07	2.82	7.63	109.16	53.62	2.84	0.99	3.68	24.82	0.34	0.21	24.82	0.34	0.21
IMI_030	2.92	3.26	10.23	167.04	91.60	10.08	0.99	3.51	24.76	0.34	0.21	24.76	0.34	0.21

Aggiornamento delle mappe di pericolosità da alluvione e rischio di alluvioni comprensive di battenti e velocità necessarie per l'applicazione della LR 41/2008 ai sensi dell'articolo 4 della legge regionale n. 73 del 27/12/2018 per i Comuni di Pistoia, Agliana, Quarrata, Montale e Serravalle Pistoiese

Immissione	Area [km ²]	T ritardo [h]	Portata [m ³ /s]	Precipit. [mm]	Deflusso [mm]	Durata critica [h]	Coeff. ragguglio	Defl. unit. [m ³ /s km ²]	CPP a<1h	CPP n<1h	CPP m<1h	CPP a>1h	CPP n>1h	CPP m>1h
IMI_031	4.71	3.23	12.89	113.01	44.84	3.28	0.99	2.74	24.65	0.34	0.21	24.65	0.34	0.21
IMI_032	8.42	3.72	27.42	116.77	58.46	3.67	0.98	3.26	24.61	0.33	0.21	24.61	0.33	0.21
IMI_033	10.03	4.08	26.93	117.93	49.86	3.82	0.97	2.68	24.57	0.33	0.21	24.57	0.33	0.21
IMI_035	11.58	4.52	26.34	125.11	50.87	4.61	0.97	2.27	24.54	0.33	0.21	24.54	0.33	0.21
IMI_036	2.23	4.44	4.19	190.62	121.90	20.83	1.00	1.88	24.68	0.30	0.21	24.68	0.30	0.21
IMI_037	3.97	5.05	5.95	140.44	83.50	7.80	0.99	1.50	24.79	0.30	0.21	24.79	0.30	0.21
IMI_038	4.85	5.84	8.70	185.13	124.16	19.99	0.99	1.79	24.73	0.30	0.21	24.73	0.30	0.21
IMI_039	0.00	0.80	0.01	165.38	82.22	11.92	1.00	3.42	24.51	0.32	0.21	24.51	0.32	0.21
IMI_040	0.16	1.83	0.43	177.19	99.31	15.08	1.00	2.66	24.40	0.32	0.21	24.40	0.32	0.21
IMI_041	1.64	3.23	3.55	189.39	116.24	18.92	1.00	2.16	24.47	0.31	0.21	24.47	0.31	0.21
IMI_042	2.98	3.88	5.95	192.57	122.63	20.33	1.00	2.00	24.42	0.31	0.21	24.42	0.31	0.21
IMI_043	3.24	4.21	6.32	194.65	126.10	21.07	0.99	1.95	24.43	0.31	0.21	24.43	0.31	0.21
IMI_044	5.19	4.47	9.82	194.85	127.07	21.61	0.99	1.89	24.47	0.31	0.21	24.47	0.31	0.21
IMI_045	5.80	4.88	10.43	197.75	130.90	22.88	0.99	1.80	24.49	0.31	0.21	24.49	0.31	0.21
IMI_046	0.80	3.12	1.77	185.87	110.05	17.93	1.00	2.22	24.44	0.31	0.21	24.44	0.31	0.21
IMI_047	0.46	3.28	1.00	191.85	119.15	18.98	1.00	2.19	24.54	0.32	0.21	24.54	0.32	0.21
IMI_048	2.74	4.11	5.69	191.35	119.46	18.87	1.00	2.08	24.46	0.32	0.21	24.46	0.32	0.21
IMI_050	4.15	4.12	8.63	190.49	118.14	18.91	0.99	2.08	24.43	0.32	0.21	24.43	0.32	0.21
IMI_051	0.05	1.32	0.09	71.26	37.00	0.87	1.00	1.92	24.24	0.31	0.21	24.24	0.31	0.21
IMI_052	0.43	1.65	0.54	114.94	54.84	4.01	1.00	1.24	24.21	0.31	0.21	24.21	0.31	0.21
IMI_054	6.02	4.30	9.65	137.25	77.40	6.87	0.99	1.60	24.38	0.31	0.21	24.38	0.31	0.21
IMI_055	7.01	4.62	11.89	137.30	78.96	6.96	0.98	1.70	24.35	0.31	0.21	24.35	0.31	0.21
IMI_056	10.02	5.13	19.16	190.54	123.37	20.24	0.98	1.91	24.34	0.31	0.21	24.34	0.31	0.21
IMI_057	10.08	5.72	18.74	191.77	127.62	20.77	0.98	1.86	24.34	0.31	0.21	24.34	0.31	0.21
IMI_058	0.28	3.44	0.52	186.66	119.13	21.06	1.00	1.87	24.33	0.30	0.21	24.33	0.30	0.21
IMI_060	10.39	5.76	19.13	192.39	128.16	21.05	0.98	1.84	24.33	0.31	0.21	24.33	0.31	0.21
IMI_061	0.15	2.84	0.61	101.75	59.77	2.82	1.00	4.12	24.21	0.30	0.21	24.21	0.30	0.21
IMI_063	10.54	5.73	19.22	191.89	127.67	20.85	0.98	1.82	24.33	0.31	0.21	24.33	0.31	0.21
IMI_064	0.96	2.93	1.26	130.65	69.39	6.46	1.00	1.31	24.12	0.30	0.21	24.12	0.30	0.21

Aggiornamento delle mappe di pericolosità da alluvione e rischio di alluvioni comprensive di battenti e velocità necessarie per l'applicazione della LR 41/2008 ai sensi dell'articolo 4 della legge regionale n. 73 del 27/12/2018 per i Comuni di Pistoia, Agliana, Quarrata, Montale e Serravalle Pistoiese

Immissione	Area [km ²]	T ritardo [h]	Portata [m ³ /s]	Precipit. [mm]	Deflusso [mm]	Durata critica [h]	Coeff. ragguaglio	Defl. unit. [m ³ /s km ²]	CPP a<1h	CPP n<1h	CPP m<1h	CPP a>1h	CPP n>1h	CPP m>1h
IMI_065	1.79	3.71	3.53	182.32	111.25	19.38	1.00	1.97	24.13	0.30	0.21	24.13	0.30	0.21
IMI_066	0.29	0.84	3.50	82.51	57.81	1.27	1.00	12.21	24.78	0.34	0.21	24.78	0.34	0.21
IMI_067	1.93	1.97	12.96	107.30	66.28	2.80	0.99	6.73	24.61	0.34	0.21	24.61	0.34	0.21
IMI_068	0.17	0.67	2.39	76.30	54.29	1.02	1.00	14.13	24.65	0.34	0.21	24.65	0.34	0.21
IMI_069	0.93	1.87	7.07	101.38	68.42	2.37	1.00	7.58	24.58	0.34	0.21	24.58	0.34	0.21
IMI_071	4.00	2.34	24.01	114.57	72.14	3.42	0.99	6.00	24.62	0.34	0.21	24.62	0.34	0.21
IMI_072	4.97	2.75	26.83	120.51	75.72	4.02	0.99	5.40	24.60	0.33	0.21	24.60	0.33	0.21
IMI_073	0.18	2.71	0.86	127.05	75.59	5.08	1.00	4.82	24.52	0.32	0.21	24.52	0.32	0.21
IMI_075	5.67	3.27	27.58	126.84	81.48	4.73	0.98	4.87	24.59	0.33	0.21	24.59	0.33	0.21
IMI_076	0.08	2.40	0.34	124.89	73.78	5.78	1.00	4.27	23.96	0.30	0.21	23.96	0.30	0.21
IMI_077	1.32	2.48	6.34	112.66	70.71	4.11	1.00	4.79	23.93	0.30	0.21	23.93	0.30	0.21
IMI_078	2.73	3.18	11.20	120.16	79.55	5.07	0.99	4.10	24.15	0.30	0.21	24.15	0.30	0.21
IMI_079	4.53	2.96	18.35	122.85	78.38	5.51	0.99	4.05	24.29	0.29	0.21	24.29	0.29	0.21
IMI_080	6.07	3.24	23.32	124.20	79.93	5.86	0.98	3.84	24.18	0.29	0.21	24.18	0.29	0.21

Tabella 3-2 – Tabulati analisi idrologica al colmo immissioni Acque Basse TR 200 anni