

**COMUNE DI MONTALE**  
PROVINCIA DI PISTOIA

**regolamento urbanistico**

IL SINDACO:  
Piero Razzoli

STUDI GEOLOGICI  
dot. Geol. Guido Mannori  
Studio Associato Mannori e Burchielli

STUDI IDROLOGICI E IDRAULICI  
prof. Enio Paris  
collaboratori:  
ing. Daniele Saffroni  
ing. Michele Carella  
dot. Siva Argenti

PROGETTISTA:  
arch. Giannino Biagini  
collaboratrice:  
arch. Benedetta Biagini

RESPONSABILE DEL SERVIZIO URBANISTICA:  
geom. Riccardo Viviani

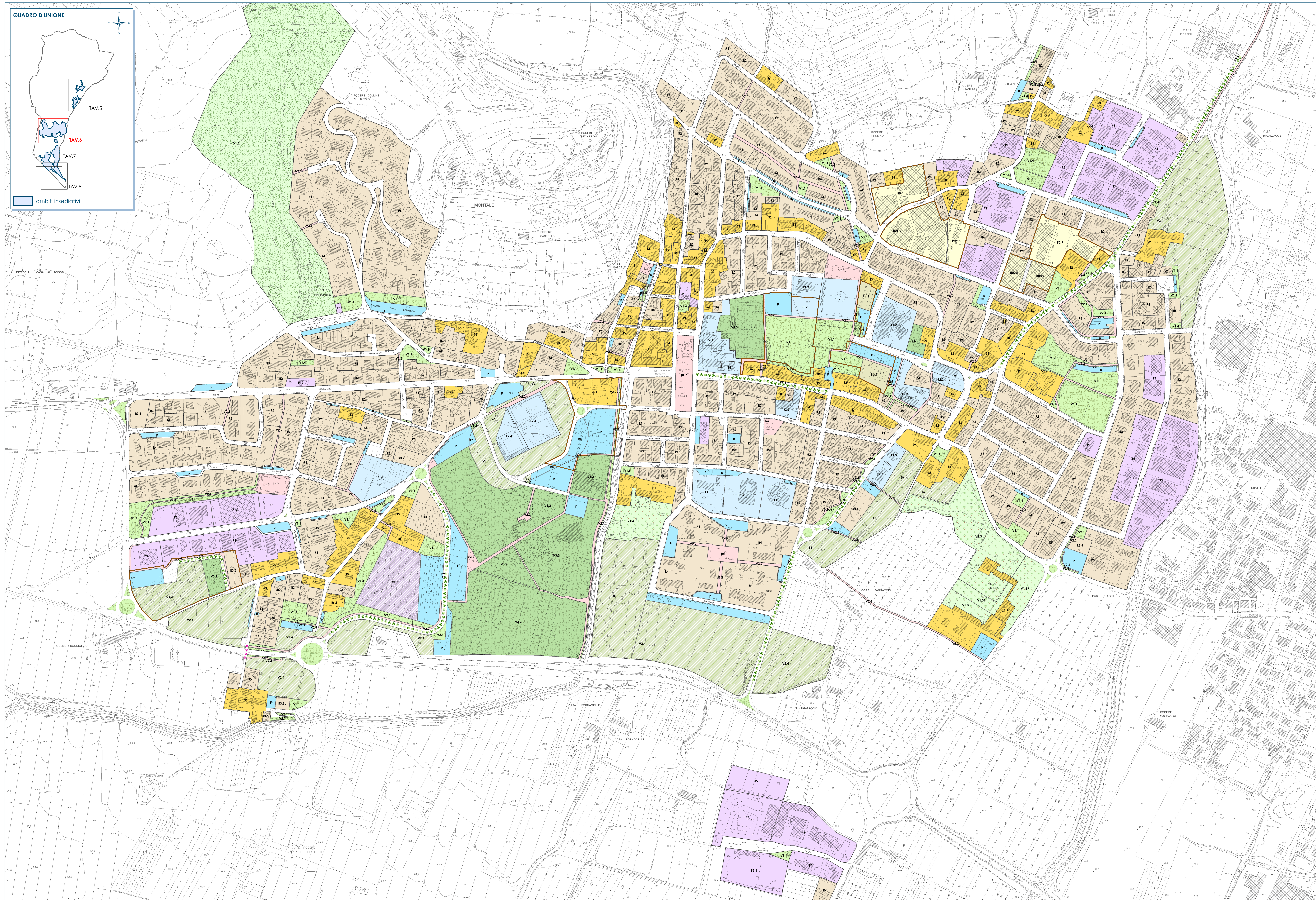
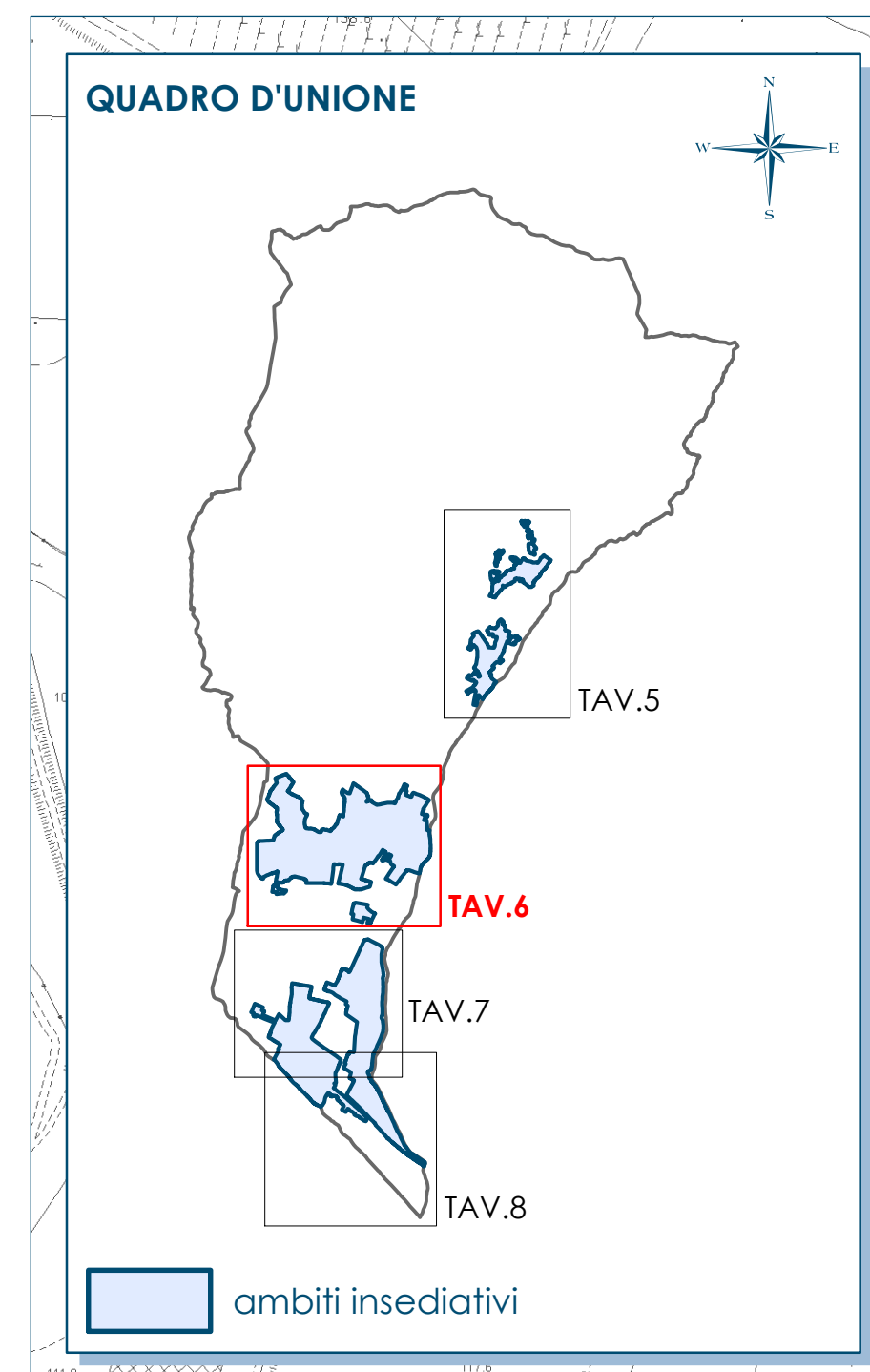
SENTINERISCA  
E VALUTAZIONI AMBIENTALI  
Studio SINERGIA:  
dot. Laura Fossi  
dot. Luca Gardano  
collaboratori:  
ing. Francesco Pecchioli  
dot. Marcello Ghisai  
dot. Massimiliano Petrosi  
dot. Matteo Faloni  
dot. Luigi Punteri

GARANTE DELLA COMUNICAZIONE:  
dot. Vincenzo Lucareo

ELABORATI DI PROGETTO  
Aprile 2009  
Modificato a seguito della Variante 1  
D.C.C. n. 90 del 13.10.2011 e n. 91 del 14.10.2011  
E.U.R. n. 44 del 16.11.2011

**USO E DISCIPLINA DEL SUOLO E DEL PATRIMONIO EDILIZIO NEGLI AMBITI INSEDIATIVI**

TAV. I/L  
scala 1:2000



**LEGENDA**  
con riferimento alle N.T.A.

**TERRITORIO APERTO**  
E6 (art. 37)

**SPAZI URBANI APERTI**  
D1 (art. 43)  
V2.2 (art. 47)  
P (art. 44)  
PC (art. 49)  
PI (art. 44)  
V1.1; V1.7; V1.6; V1.5; V1.4 (art. 44)  
V2.1 (art. 47)  
V1.2 (art. 46)  
V1.3; V1.3F (art. 44)  
V2.4; V2.4c; V2.5; V2.6 (art. 47)  
Vc (art. 49)  
V2.3 (art. 47)  
V3.1; V3.2; V3.3 (art. 48)

**SERVIZI DI INTERESSE COLLETTIVO**  
F  
F1.1; F1.2; F1.3; F2.1; F2.2; F2.3; F2.4 (art. 50)  
Fsr  
Fsr.1; Fsr.2 (art. 50 bis)

**PATRIMONIO EDILIZIO ESISTENTE**  
**PERMANENZE STORICHE**  
S  
S1; S1.F; S2; S3 (art. 40-41)  
R; R1; R1.2 (art. 49)  
Sc (art. 49)

**TESSUTO PREVALENTEMENTE RESIDENZIALE**  
R  
R1; R2; R3; R3.1; R3.2; R3.3a; R3.3b; R3.4; R3.5; R3.6;  
R3.7; R3.8 (art. 40)  
R4 (art. 41)  
Rc (art. 49)

**TESSUTO PROMISCUEO**  
R5  
R5; R5.1 (art. 42)  
R6  
R6.2 (art. 62, 84)

**TESSUTO PRODUTTIVO**  
P  
P1; P1.1; P2; P2.1; P2.2; P2.3 (art. 44)  
P3; P3.1; P4 (art. 45)  
P5 (art. 46)  
P6 (art. 47)  
P7 (art. 48)  
P8 (art. 49)  
P10 (art. 71)  
P9 (art. 70)  
P1.R; P2.R (art. 63)  
P1.Rc (art. 49)

**AREE DI TRASFORMAZIONE**  
**AREE DI RIORDINO URBANO**  
Ru2a; Ru2b; Ru3a; Ru3b; Ru3c; Ru3d; Ru3e; Ru3f; Ru3g; Ru3h; Ru3i; Ru3j; Ru3k; Ru3l; Ru3m; Ru3n; Ru3o; Ru3p; Ru3q; Ru3r; Ru3s; Ru3t; Ru3u; Ru3v; Ru3w; Ru3x; Ru3y; Ru3z; Ru3aa; Ru3ab; Ru3ac; Ru3ad; Ru3ae; Ru3af; Ru3ag; Ru3ah; Ru3ai; Ru3aj; Ru3ak; Ru3al; Ru3am; Ru3an; Ru3ao; Ru3ap; Ru3aq; Ru3ar; Ru3as; Ru3at; Ru3au; Ru3av; Ru3aw; Ru3ax; Ru3ay; Ru3az; Ru3ba; Ru3bb; Ru3bc; Ru3bd; Ru3be; Ru3bf; Ru3bg; Ru3bh; Ru3bi; Ru3bj; Ru3bk; Ru3bl; Ru3bm; Ru3bn; Ru3bo; Ru3bp; Ru3bq; Ru3br; Ru3bs; Ru3bt; Ru3bu; Ru3bv; Ru3bw; Ru3bx; Ru3by; Ru3bz; Ru3ca; Ru3cb; Ru3cc; Ru3cd; Ru3ce; Ru3cf; Ru3cg; Ru3ch; Ru3ci; Ru3cj; Ru3ck; Ru3cl; Ru3cm; Ru3cn; Ru3co; Ru3cp; Ru3cq; Ru3cr; Ru3cs; Ru3ct; Ru3cu; Ru3cv; Ru3cw; Ru3cx; Ru3cy; Ru3cz; Ru3da; Ru3db; Ru3dc; Ru3dd; Ru3de; Ru3df; Ru3dg; Ru3dh; Ru3di; Ru3dj; Ru3dk; Ru3dl; Ru3dm; Ru3dn; Ru3do; Ru3dp; Ru3dq; Ru3dr; Ru3ds; Ru3dt; Ru3du; Ru3dv; Ru3dw; Ru3dx; Ru3dy; Ru3dz; Ru3ea; Ru3eb; Ru3ec; Ru3ed; Ru3ee; Ru3ef; Ru3eg; Ru3eh; Ru3ei; Ru3ej; Ru3ek; Ru3el; Ru3em; Ru3en; Ru3eo; Ru3ep; Ru3eq; Ru3er; Ru3es; Ru3et; Ru3eu; Ru3ev; Ru3ew; Ru3ex; Ru3ey; Ru3ez; Ru3fa; Ru3fb; Ru3fc; Ru3fd; Ru3fe; Ru3ff; Ru3fg; Ru3fh; Ru3fi; Ru3fj; Ru3fk; Ru3fl; Ru3fm; Ru3fn; Ru3fo; Ru3fp; Ru3fq; Ru3fr; Ru3fs; Ru3ft; Ru3fu; Ru3fv; Ru3fw; Ru3fx; Ru3fy; Ru3fz; Ru3ga; Ru3gb; Ru3gc; Ru3gd; Ru3ge; Ru3gf; Ru3gg; Ru3gh; Ru3gi; Ru3gj; Ru3gk; Ru3gl; Ru3gm; Ru3gn; Ru3go; Ru3gp; Ru3gq; Ru3gr; Ru3gs; Ru3gt; Ru3gu; Ru3gv; Ru3gw; Ru3gx; Ru3gy; Ru3gz; Ru3ha; Ru3hb; Ru3hc; Ru3hd; Ru3he; Ru3hf; Ru3hg; Ru3hh; Ru3hi; Ru3hj; Ru3hk; Ru3hl; Ru3hm; Ru3hn; Ru3ho; Ru3hp; Ru3hq; Ru3hr; Ru3hs; Ru3ht; Ru3hu; Ru3hv; Ru3hw; Ru3hx; Ru3hy; Ru3hz; Ru3ia; Ru3ib; Ru3ic; Ru3id; Ru3ie; Ru3if; Ru3ig; Ru3ih; Ru3ii; Ru3ij; Ru3ik; Ru3il; Ru3im; Ru3in; Ru3io; Ru3ip; Ru3iq; Ru3ir; Ru3is; Ru3it; Ru3iu; Ru3iv; Ru3iw; Ru3ix; Ru3iy; Ru3iz; Ru3ja; Ru3jb; Ru3jc; Ru3jd; Ru3je; Ru3jf; Ru3jg; Ru3jh; Ru3ji; Ru3jj; Ru3jk; Ru3jl; Ru3jm; Ru3jn; Ru3jo; Ru3jp; Ru3jq; Ru3jr; Ru3js; Ru3jt; Ru3ju; Ru3jv; Ru3jw; Ru3jx; Ru3jy; Ru3jz; Ru3ka; Ru3kb; Ru3kc; Ru3kd; Ru3ke; Ru3kf; Ru3kg; Ru3kh; Ru3ki; Ru3kj; Ru3kk; Ru3kl; Ru3km; Ru3kn; Ru3ko; Ru3kp; Ru3kq; Ru3kr; Ru3ks; Ru3kt; Ru3ku; Ru3kv; Ru3kw; Ru3kx; Ru3ky; Ru3kz; Ru3la; Ru3lb; Ru3lc; Ru3ld; Ru3le; Ru3lf; Ru3lg; Ru3lh; Ru3li; Ru3lj; Ru3lk; Ru3ll; Ru3lm; Ru3ln; Ru3lo; Ru3lp; Ru3lq; Ru3lr; Ru3ls; Ru3lt; Ru3lu; Ru3lv; Ru3lw; Ru3lx; Ru3ly; Ru3lz; Ru3ma; Ru3mb; Ru3mc; Ru3md; Ru3me; Ru3mf; Ru3mg; Ru3mh; Ru3mi; Ru3mj; Ru3mk; Ru3ml; Ru3mn; Ru3mo; Ru3mp; Ru3mq; Ru3mr; Ru3ms; Ru3mt; Ru3mu; Ru3mv; Ru3mw; Ru3mx; Ru3my; Ru3mz; Ru3na; Ru3nb; Ru3nc; Ru3nd; Ru3ne; Ru3nf; Ru3ng; Ru3nh; Ru3ni; Ru3nj; Ru3nk; Ru3nl; Ru3nm; Ru3nn; Ru3no; Ru3np; Ru3nq; Ru3nr; Ru3ns; Ru3nt; Ru3nu; Ru3nv; Ru3nw; Ru3nx; Ru3ny; Ru3nz; Ru3oa; Ru3ob; Ru3oc; Ru3od; Ru3oe; Ru3of; Ru3og; Ru3oh; Ru3oi; Ru3oj; Ru3ok; Ru3ol; Ru3om; Ru3on; Ru3oo; Ru3op; Ru3oq; Ru3or; Ru3os; Ru3ot; Ru3ou; Ru3ov; Ru3ow; Ru3ox; Ru3oy; Ru3oz; Ru3pa; Ru3pb; Ru3pc; Ru3pd; Ru3pe; Ru3pf; Ru3pg; Ru3ph; Ru3pi; Ru3pj; Ru3pk; Ru3pl; Ru3pm; Ru3pn; Ru3po; Ru3pp; Ru3pq; Ru3pr; Ru3ps; Ru3pt; Ru3pu; Ru3pv; Ru3pw; Ru3px; Ru3py; Ru3pz; Ru3qa; Ru3qb; Ru3qc; Ru3qd; Ru3qe; Ru3qf; Ru3qg; Ru3qh; Ru3qi; Ru3qj; Ru3qk; Ru3ql; Ru3qm; Ru3qn; Ru3qo; Ru3qp; Ru3qq; Ru3qr; Ru3qs; Ru3qt; Ru3qu; Ru3qv; Ru3qw; Ru3qx; Ru3qy; Ru3qz; Ru3ra; Ru3rb; Ru3rc; Ru3rd; Ru3re; Ru3rf; Ru3rg; Ru3rh; Ru3ri; Ru3rj; Ru3rk; Ru3rl; Ru3rm; Ru3rn; Ru3ro; Ru3rp; Ru3rq; Ru3rr; Ru3rs; Ru3rt; Ru3ru; Ru3rv; Ru3rw; Ru3rx; Ru3ry; Ru3rz; Ru3sa; Ru3sb; Ru3sc; Ru3sd; Ru3se; Ru3sf; Ru3sg; Ru3sh; Ru3si; Ru3sj; Ru3sk; Ru3sl; Ru3sm; Ru3sn; Ru3so; Ru3sp; Ru3sq; Ru3sr; Ru3ss; Ru3st; Ru3su; Ru3sv; Ru3sw; Ru3sx; Ru3sy; Ru3sz; Ru3ta; Ru3tb; Ru3tc; Ru3td; Ru3te; Ru3tf; Ru3tg; Ru3th; Ru3ti; Ru3tj; Ru3tk; Ru3tl; Ru3tm; Ru3tn; Ru3to; Ru3tp; Ru3tq; Ru3tr; Ru3ts; Ru3tt; Ru3tu; Ru3tv; Ru3tw; Ru3tx; Ru3ty; Ru3tz; Ru3ua; Ru3ub; Ru3uc; Ru3ud; Ru3ue; Ru3uf; Ru3ug; Ru3uh; Ru3ui; Ru3uj; Ru3uk; Ru3ul; Ru3um; Ru3un; Ru3uo; Ru3up; Ru3uq; Ru3ur; Ru3us; Ru3ut; Ru3uu; Ru3uv; Ru3uw; Ru3ux; Ru3uy; Ru3uz; Ru3va; Ru3vb; Ru3vc; Ru3vd; Ru3ve; Ru3vf; Ru3vg; Ru3vh; Ru3vi; Ru3vj; Ru3vk; Ru3vl; Ru3vm; Ru3vn; Ru3vo; Ru3vp; Ru3vq; Ru3vr; Ru3vs; Ru3vt; Ru3vu; Ru3vv; Ru3vw; Ru3vx; Ru3vy; Ru3vz; Ru3wa; Ru3wb; Ru3wc; Ru3wd; Ru3we; Ru3wf; Ru3wg; Ru3wh; Ru3wi; Ru3wj; Ru3wk; Ru3wl; Ru3wm; Ru3wn; Ru3wo; Ru3wp; Ru3wq; Ru3wr; Ru3ws; Ru3wt; Ru3wu; Ru3wv; Ru3ww; Ru3wx; Ru3wy; Ru3wz; Ru3xa; Ru3xb; Ru3xc; Ru3xd; Ru3xe; Ru3xf; Ru3xg; Ru3xh; Ru3xi; Ru3xj; Ru3xk; Ru3xl; Ru3xm; Ru3xn; Ru3xo; Ru3xp; Ru3xq; Ru3xr; Ru3xs; Ru3xt; Ru3xu; Ru3xv; Ru3xw; Ru3xx; Ru3xy; Ru3xz; Ru3ya; Ru3yb; Ru3yc; Ru3yd; Ru3ye; Ru3yf; Ru3yg; Ru3yh; Ru3yi; Ru3yj; Ru3yk; Ru3yl; Ru3ym; Ru3yn; Ru3yo; Ru3yp; Ru3yq; Ru3yr; Ru3ys; Ru3yt; Ru3yu; Ru3yv; Ru3yw; Ru3yx; Ru3yy; Ru3yz; Ru3za; Ru3zb; Ru3zc; Ru3zd; Ru3ze; Ru3zf; Ru3zg; Ru3zh; Ru3zi; Ru3zj; Ru3zk; Ru3zl; Ru3zm; Ru3zn; Ru3zo; Ru3zp; Ru3zq; Ru3zr; Ru3zs; Ru3zt; Ru3zu; Ru3zv; Ru3zw; Ru3zx; Ru3zy; Ru3zz

**AREE PER NUOVI INSEDIAMENTI PRODUTTIVI**  
P1.1 (art. 84)

**SISTEMA DELLA VIABILITA'**  
viabilità di previsione  
ferrovia  
sottopassi ciclo-pedonali  
P12 (art. 42)